



# RapidFire™ and RapidFire™ Professional Digital Infrared Camera Instruction Manual



Copyright: December 2008

## Table of Contents

I.	Camera Overview .....	1
II.	Battery & Memory Card Installation .....	4
III.	Initial Setup & Programming .....	9
IV.	Mounting & Aiming Your Camera .....	15
V.	General Information .....	18
VI.	Troubleshooting.....	19
VII.	Warranty & Safety Information.....	23
VIII.	Copyright & Trademark Information.....	26

## **Camera Overview**

---

Congratulations on purchasing a RECONYX camera. RECONYX has been the leader in digital wildlife cameras since 2003. Your RapidFire™ camera includes a state-of-the-art digital camera, an integrated Passive InfraRed (PIR) motion detector, and a night time infrared illuminator all contained in a secure, rugged, and weather-resistant case.

Whether you are using the camera for scouting deer or studying wildlife, you will quickly find that using the RapidFire™ camera in conjunction with MapView or BuckView software will be one of your most valuable tools in gathering and analyzing data.

Thank you for putting your trust in us!

### **Contents of this package**

1. RapidFire™ Game Camera & Software
  - RM45, RC55, RC60, or MC65
  - BuckView™ Image management softwareor RapidFire™ Professional Camera & Software
  - PM75, PC85, or PC90
  - MapView Image Management Software
2. Adjustable bungee cord for mounting camera.
3. This instruction manual.

## Camera Comparison

<b>Cameras &amp; Specifications</b>	<b>RM45 &amp; PM75</b>	<b>RC55, MC65 &amp; PC85</b>	<b>RC60, PC90 &amp; * H.O. Editions</b>
<b>Images</b>	<i>Day and Night:</i> 1.3 MP monochrome images	<i>Day:</i> 1080p HD or 3.1 MP color images <i>Night:</i> 1080p HD or 3.1 MP monochrome images	<i>Day:</i> 1080p HD or 3.1 MP color images <i>Night:</i> 1080p HD or 3.1 MP monochrome images
<b>InstaOn™ Trigger Speed</b>	1/10 second	1/5 second	1/5 second
<b>RapidFire™ NearVideo™</b>	Up to 2 frames per second	Up to 1 frame per second	Up to 1 frame per second
<b>Capacity with 4 GB card</b>	15,000 to 20,000 images	10,000 to 15,000 images	10,000 to 15,000 images
<b>Range at night</b>	50 to 60 feet	50 to 60 feet	30 to 35 feet standard (* 50 feet for H.O. Editions)

\* H.O. (High Output) edition cameras must be run on either NiMH rechargeable batteries or Energizer® 1.5V AA Ultimate Lithium batteries.

Note: CF cards up to 32GB may be used, but under normal use 2GB and 4GB cards are more than adequate.



## **BUCKVIEW™**

Included with your game camera (RM45, RC55, RC60, MC65) is BuckView mapping and image management software. BuckView offers you the ability to geographically organize and access your images, helping you to pattern and better understand animal movements and behaviors. Refer to the *BuckView User Guide*, accessible within the software, for more information. BuckView requires a personal computer running either Windows XP® or Windows Vista®.



## **MapView Professional**

Included with your professional camera (PM75, PCC85, PC90) is MapView Professional software that offers you the ability to geographically organize and access your images. It also supports data analysis with user-defined metadata and export capabilities and allows you to change the advanced settings on your Professional Camera. MapView requires a personal computer running either Windows XP® or Windows Vista®.

## Battery & Memory Card Installation

---

### Removing and Replacing the Camera's Cover

Before installing batteries or a memory card, you need to remove the camera's cover. To do this, open the clasp at the bottom of the camera using the thumb grip in the middle of the bottom edge. Then, lift the cover from the bottom, rotating it upward until you can remove it from the camera.



To replace the camera's cover, insert the cover along the bottom edge of the camera's faceplate and rotate it downward until it's flush with the camera. Snap the clasp, pressing firmly in the middle of the clasp, to secure the cover.



It's good practice to make sure the gasket and camera lenses are clean each time you open and close your camera.

## Battery Specifications and Installation

Your RECONYX RapidFire™ camera runs on six C-cell batteries or 6 AA batteries (when used with AA->C Cell adapters). You can run Alkaline, Nickel Metal Hydride (rechargeable), or 1.5V Lithium batteries (Professional models will also run on 3V Lithium batteries for extended run time). Batteries load vertically (three on each side) into the two battery trays. *Note:* Be sure to load batteries in the proper orientation (positive end in first).



**Warning!** Do not mix battery types! Damage to the camera can result and your warranty will be voided if you mix battery types.

C-Cell Alkaline batteries are inexpensive and will run well at moderate temperatures in most RECONYX cameras. **If you purchased a High Output (H.O.) RC60 or PC90, alkaline batteries Will Not run well in it.** If you have an H.O. camera and/or want to use your camera when the weather turns cold, you should run with either NiMH rechargeable batteries or AA 1.5V Lithium batteries (using adapters). NiMH will run at temperatures down to -20°F or colder. Lithium batteries will run to -40°F.

**Note:** Lithium AA and NiMH rechargeable batteries provide better night time consistency than C-Cell Alkaline batteries. You can purchase 1.5V Lithium batteries and adapters as well as NiMH rechargeable batteries and chargers at [www.reconyx.com](http://www.reconyx.com).

Because camera settings, animal activity, and temperature all vary, there is no way to precisely predict a camera's *run time*, the total number of images that can be taken, or the temperature at which the camera will operate on any given set of batteries. Therefore the following table shows *approximate values* to be used as a guide in determining what type of batteries will best suit your needs.

<b>Battery Type</b>	<b>Operating Temperature</b>	<b>Run Time</b>	<b>Number of Images</b>
C-Cell Alkaline <b>Do Not run Alkaline batteries in H.O. cameras!</b>	20° F (-7° C) and above	*6 – 10 weeks	*10,000 to 15,000
C-Cell Nickel-Metal Hydride (rechargeable)	-20° F (-29° C) and above	*4 – 8 weeks	*7,500 to 10,000
AA Energizer Ultimate Lithium (1.5V)	-40° F (-40° C) and above	8 – 12 weeks	12,500 to 17,500
C-Cell Lithium (3V disposable) <b>(Professional models only)</b>	-40° F (-40° C) and above	10 – 16 weeks	15,000 to 30,000

\*High temperatures can reduce run time with Alkaline and NiMH batteries by 50% or more.

**TIP:** AA batteries can also be used in your RapidFire camera – provided you use AA to C-Cell battery adapters (available at [www.reconyx.com](http://www.reconyx.com)).

## CompactFlash® (CF) Card Specifications and Installation

The CompactFlash (CF) card is used to store the pictures your camera captures. These images may be transferred to your computer using standard image viewing software or RECONYX MapView or BuckView™ mapping and image management software.

### Inserting and Removing the CompactFlash Card

Insert CF card as shown. Make sure the orientation is correct and that the card is aligned properly. Then press gently to seat the card in the holder.



To change CF cards in the field:

1. Press <OK> to disarm (the camera will then show you status)
2. Turn the power off.
3. Remove the card by pulling it straight out of the receiver port.
4. Insert the new CompactFlash card into the receiver slot under the control buttons as shown.
5. The card must be inserted face up with the connecting ports in first.

**Note:** Always disarm and turn the power off before removing or inserting the CompactFlash card.

CompactFlash cards have various speeds and capacities. Larger capacity cards are capable of storing more images. The following table shows approximate number of images for a 4GB CF card. Your RapidFire camera will take cards up to 32GB, but most users will find 2GB and 4GB cards to be more than adequate for normal use.

Camera / Capacity	RM45 & PM75	RC55, MC65 & PC85	RC60 & PC90
Capacity with 4 GB card	15,000 to 20,000 images	10,000 to 15,000 images	10,000 to 15,000 images

**TIP:** We recommend that you purchase two CF cards per camera so that you can swap cards in the field. SanDisk cards have worked well for us. You can purchase RECONYX certified CF cards at [www.reconyx.com](http://www.reconyx.com).

Cards with higher speed ratings are capable of reading and writing images faster. This is advantageous when taking RapidFire™ NearVideo™ sequences of images.

## Initial Setup & Programming

---

With the CF card inserted in the camera, turn your camera on using the **On/Off** switch. If this is the first time you've used your camera, it will automatically display the **Date/Time** setup change option, beginning with **Enter Year**.



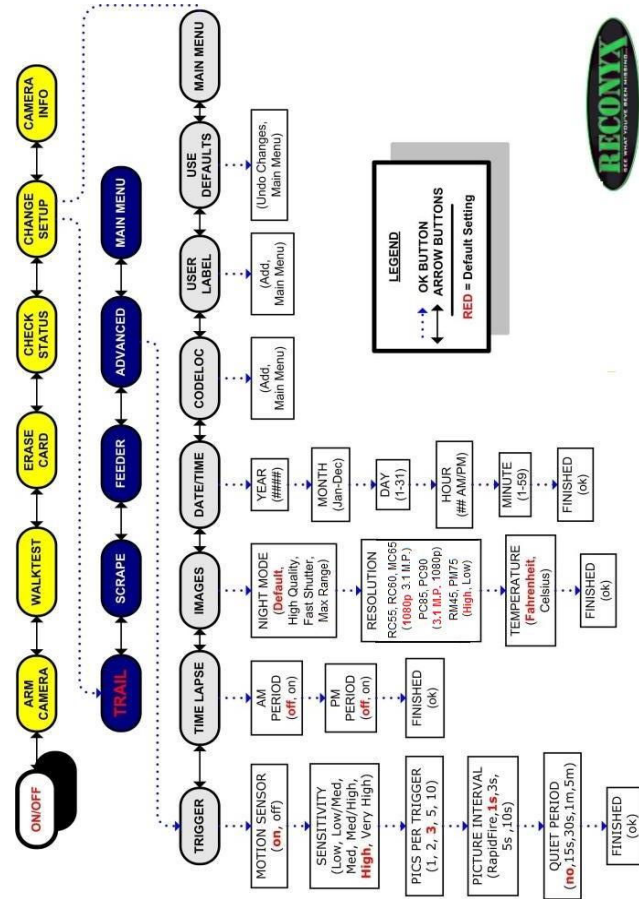
Press the << and >> buttons to set the date (year, month, and day) and time (hour and minute); press the **OK** button after each part of the date and time are correct.

Your RECONYX RapidFire™ camera comes pre-programmed with factory default settings. By default the camera will take 3 pictures per trigger with a 1 second pause between pictures and no delay between triggers.

If you wish to change your camera's settings you can do so easily in the field at any time. Changes are made using the control buttons and display that are located under the **Removable Cover**. Once you make selections, they are retained by the camera – even when the camera is off and the batteries are removed – so that you don't need to make selections again unless you want to change something.

If you purchased a Professional model camera you can use the MapView software to access additional features that are only available on the professional series cameras. See the MapView User's Guide for more information.

# RAPIDFIRE™ PROGRAMMING MENU



**LEGEND**  
 ... → OK BUTTON  
 ← → ARROW BUTTONS  
 RED = Default Setting

Your camera includes three major levels of options: **Main** menus, **Change Setup** menus, and **Selection** options. As with the date and time, you can move through any of these menus and options by pressing the << and >> buttons; the >> button displays menus and options in order, and the << button reverses the order. When the menu or option you want to select is displayed, press the **OK** button.

The display area above the <<, >>, and **OK** buttons includes two lines of information. The top line generally displays the menu, setting, or option you are currently accessing; after you make a selection, it may also display additional information. The bottom line displays the available selections for the menu, setting, or option displayed in the top line. Selections you can choose from are always displayed in highlighted text, within single brackets.

You can change your camera settings any time you like, either prior to using the camera or in the field. Likewise, you can switch CompactFlash cards as needed, and check the remaining space on your CF card as well as your remaining battery power.



### **Main Menu**

**Arm Camera** – When you select this option, your camera arms in ten seconds, unless you cancel it before the countdown is complete. If you forget to arm the camera it will automatically arm itself after 2 minutes.

**WalkTest** – When you select this option, your camera flashes an indicator light so that you can test its aim by walking in front of it. The WalkTest mode

shows you exactly where the camera's active motion detection zones are located. The tilt of the camera is critical, as slight changes are magnified at greater distances from the camera. The camera will arm itself if left in WalkTest mode (after 2 minutes with no triggering events). This allows you to set the camera up, check its aim using WalkTest, and then just walk away.

**Erase Card** – When you select this option, your camera wipes your entire CF card clean, removing all images and other information from the card. You should **not** select **Erase Card** unless you are absolutely certain you want to remove everything from the card.

**Check Status** – When you select this option, your camera displays the number of pictures it has taken, the percent of space remaining on your CF card, and the percent of battery power remaining.

**Camera Info** – When you select this option, your camera displays its firmware version number (V) and serial number (S). You may need this information when contacting RECONYX with questions about your camera.

**Change Setup** – Allows you to change the way your camera functions. Note: default settings are shown in **RED CAPITAL** letters. Professional series cameras have additional settings that can be programmed (configured) using the MapView software on your PC (see additional notes below).

**QuickSet** – When Change Setup is selected the QuickSet options are displayed (**TRAIL**, Scrape, Feeder, and Advanced). This allows you to quickly select pre-programmed settings that are optimized for particular situations. Selecting Advanced takes you to the settings listed below.

The pre-programmed QuickSet settings are:

**Trail** – 3 pictures, 1 second interval, no quiet period

**Scrape** – 5 pictures, RapidFire, no quiet period

**Feeder** – 3 pictures, 5 second interval, 15 second quiet period

**Trigger** – Use this option to turn your camera's motion sensor on or off, select the sensitivity level of the PIR motion detector, set how many photos you want your camera to take per trigger, the interval between pictures, and

the quiet period (the time period after a trigger during which the camera will not respond to motion events).

1. **Motion Sensor** – **ON**, off
2. **Sensitivity** - low, low/medium, medium, medium/high, **HIGH**, or very high
3. **Pics Per Trigger** – 1, 2, **3**, 5, or 10
4. **Picture Interval** – RapidFire, **1 SEC**, 3 sec, 5 sec, or 10 sec
5. **Quiet Period** – **NO DELAY**, 15 sec, 30 sec, 1 min, or 5 min

**Time Lapse** – Use this option to control your cameras time lapse photography, select the starting and ending times, and the interval between pictures taken.

1. **AM Period** – on, **OFF**
2. **PM Period** – on, **OFF**
3. **Time Lapse starting and ending times** – one hour increments
4. **Interval between pictures** – 1, 5, 15, or 30 minutes, 1 hour

**Images** – Use this option to adjust the night time exposure, set the resolution, and the temperature scale.

1. **Night Mode** – **DEFAULT**, high quality, fast shutter, max range
  - Default - best combination to balance image quality, shutter speed and flash range
  - High Quality - higher quality images, reduced flash range
  - Fast Shutter - reduced motion blur, reduced flash range
  - Max Range – increased range, reduced image quality
2. **Resolution** – On RC55, RC60, MC65: (**1080p** or 3.1 M.P.); On RM45, PM75: (**HIGH**, low); On PC85, PC90 (**3.1 M.P.**, 1080p)
3. **Temperature Scale** – **FAHRENHEIT**, Celsius

**Date/Time** – Used to set date and time.

**CodeLoc™** – Use this option to add a four-digit security code to prevent unauthorized use of your camera, or change or remove an existing code.

**User Label** – Use this option to add a label (up to 16 characters) that will be included with all photos taken by your camera. You can also view, change, or clear an existing label.

**Use Defaults** – Use this option to remove any changes you've made to your camera's settings and restore the factory default settings (shown above in **RED CAPITAL** letters).

**Main Menu** – Use this option to switch back to the **Main** menu options; see preceding page for more information.

### Programming RapidFire Professional Cameras with MapView

There are many more set-up options available for the Professional model cameras when using MapView. See your MapView User Guide for details on the additional setup options.

When you do program (configure) your Professional cameras using MapView, your camera will display "SAVING PRO CONFIG" when you boot the camera with the CF card used to program it. The camera will remember these settings even when shut off, so you do not need to reprogram the camera unless you want to change its behavior.

If you are using a Pro Config and you go into the Change Setup option using the camera's menu, it will prompt you with PRO CONFIG with options of GO BACK or CONTINUE. If you continue, the settings from your PRO CONFIG from the PC will be overwritten with the settings you select on the camera.

Your new MapView software is still fully compatible with our older Silent Image PM35 and RM30 series cameras. You can program old and new cameras as well as import, view, tag, and export image data from the new RapidFire Professional series cameras and the older Silent Image cameras.

**Tip:** Setting the date and time on the new RapidFire Professional cameras is easier to do right on the camera than it is through the MapView software.

## Mounting & Aiming Your Camera

---

Your RECONYX RapidFire™ camera can be mounted to a RECONYX VersaMount™ (see [www.reconyx.com](http://www.reconyx.com) for more information) or a camera tripod by utilizing the threaded insert on the back of the camera housing.

It may also be mounted to a tree by using the included adjustable bungee cord (shown below). **It is highly recommended that you use a theft deterrent device** such as a cable and lock to help secure your camera against possible theft when it is in the field. Theft deterrent cables and locks are available from RECONYX (see [www.reconyx.com](http://www.reconyx.com) to order).

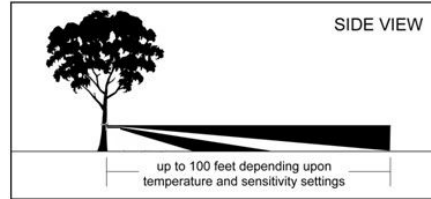
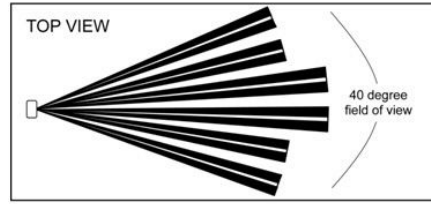
### ***Mounting Camera with Adjustable Bungee Cord (included)***



**TIP:** We recommend that you mount your camera about chest height and angle it slightly downward. This is optimal for detecting animals in the field of view of the camera as well as for accessing the camera's card, batteries, and controls. If you are concerned about the slight red glow of the non-covert illuminator spooking animals, you can mount the camera a bit higher and angle it down a little more. Most animals do not often look up and therefore are less likely to notice the camera if it is mounted a few feet higher.

## Aiming the Camera

### PIR MOTION DETECTOR COVERAGE AREA



### Walktest Mode

Learning to use the Walktest mode is critical to being as successful as possible with your RECONYX camera. The Walktest mode allows you to precisely determine your camera's active motion detection zones – insuring your camera is aimed exactly where you want to capture animal activity.

All RECONYX cameras will self-arm from Walktest mode after a two minute period during which they do not detect motion.

**Locking & Securing your Camera (Accessories not included)**



Python™ style lock

RapidFire Security Enclosure



Heavy Duty Bear Box

RapidFire Utility Box

RECONYX sells an array of accessories for securing your camera and protecting your investment. From Heavy Duty bear boxes to Python locks. Please see [www.reconyx.com](http://www.reconyx.com) for more on security accessories.

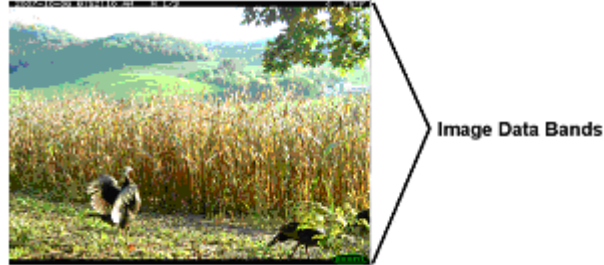
## General Information

---

### Image Data

Your RECONYX RapidFire™ camera stores Image Data along with every picture it takes. Some of this information (date, time, trigger and sequence information, the infrared illuminator “flash” indicator, moon phase, temperature, and camera label) is displayed in *Image Data bands* above and below the image.

An “M” in the top data band indicates a motion event. “1/3” indicates the first in a sequence of three pictures for that event. If, instead, you see a “T” at the top of the image, this indicates a Time-Lapse event/picture.



Phases of the moon displayed in the image bands include: ☾ (new moon), ☽ (waxing crescent), ☽ (first quarter), ☾ (waxing gibbous), ☽ (full moon), ☾ (waning gibbous), ☽ (last quarter), and ☾ (waning crescent). Any time the infrared illuminator is used, 🔦 (the infrared illuminator “flash” indicator) appears in the Image Data bands.

There is a lot more Image data stored within the image itself that is accessible using either MapView or BuckView. The additional image data includes serial number, firmware version info, illuminator status, battery voltage and so on.

MapView (Professional) users can also define their own metadata keyword fields and values to tag image data for export and further analysis.

## Troubleshooting

---

For answers to questions about your RECONYX RapidFire™ camera that you cannot find in this *Instruction Manual*, please check the RECONYX web site ([www.reconyx.com](http://www.reconyx.com)).

### **Firmware Updates**

You should also periodically check the RECONYX web site for firmware updates for your camera. We periodically release firmware updates with new features and/or performance enhancements. Updating firmware on the RapidFire series cameras takes just a few seconds, and is well worth the effort to ensure your camera is performing at the highest level possible.

### **Troubleshooting your camera**

#### **Limited Night Time Range**

*If your night time range is less than expected*, the first thing to do is change your camera's night mode image setting to Max Range. Our specified night range values are based on the Max Range setting. If this doesn't resolve the problem, then try running either NiMH rechargeable batteries, or Energizer 1.5V AA Ultimate Lithium batteries. Alkaline batteries cannot deliver enough amperage to power the illuminator consistently at night.

#### **Focus Problems**

*If your images appear cloudy or out of focus*, first consider whether there was snow or frost on the camera lens; you may wish to check your camera after a fresh snowfall to be sure the lenses are not covered with snow. Next, check the lenses for dirt and water spots, and gently clean your lenses with a clean soft cloth and lens cleaner. Also, image clarity can also be adversely affected by very high temperatures, so it is a good idea to mount your camera where it will not be getting direct sunlight during the heat of the day.

If you find that you are having issues with condensation inside the camera, you can use desiccant packs to absorb any moisture that is in the air that gets trapped inside the camera. Rechargeable desiccant packs are available on our web site ([www.reconyx.com](http://www.reconyx.com)).

### **False Triggers**

If you seem to be getting false triggers, the first thing to do is put your camera back to default settings and try your camera again. This will ensure that you are running with known settings – with the motion detector ON at HIGH sensitivity and with Time-Lapse turned OFF.

If, after going back to default setting, you still seem to be getting false triggers, check the physical setup of your camera: the sun should not be shining directly on the face of the camera, and the camera's field of view should be cleared of as much moving vegetation as possible. False triggers most often occur on sunny, breezy days. Vegetation will soak up the sun's energy and it will become warmer than the ambient air temperature. Then, when the wind moves the vegetation, the camera sees this and cannot distinguish it from a warm-blooded animal moving in the scene. For this reason, careful placement and setup of your camera helps prevent false triggers.

Only as a last resort should you turn down your camera's motion sensitivity; this reduces your ability to detect movement of warm-blooded animals, especially during the summer.

### **Camera Not Triggering on Animals**

The first thing to do is put the camera back to Default settings and try your camera again. This will ensure that you are running with known settings – it will turn the motion detector ON at HIGH sensitivity. This is important, especially in the warmer months, because as the background temperature approaches the temperature of the animals, the strength of the signal decreases and the range goes down accordingly.

If, after going back to default settings, you are still having trouble, please refer to pages 15 and 16 for detailed information on Mounting and Aiming Your Camera, as well as using the WalkTest mode. Keep in mind that most animals are not 6ft tall, so when you use the WalkTest mode, do not just walk by the camera in a full upright stance. The camera may be triggering on your upper torso or head and not on your legs (where most animals are likely to be). There is an inactive zone (see side-view photo on page 16) that

you need to be aware of so that you don't aim the inactive zone precisely on a trail – if you do, you will not pick up animal activity on the trail.

It is important to keep in mind that there are other factors can also affect the ability of your camera to detect motion. Wind can have a detrimental effect. Body heat from an animal can be quickly dispersed away from the animal on a breezy day, making it more difficult for the camera to detect the animal. Also movement directly toward and away from the camera is less likely to trigger the camera than side-to-side movement. And, finally, if an animal is moving very slowly, it will sometimes not produce a strong enough signal within the sensor to trigger the camera.

#### **CF Card Problems**

*If your camera won't start up properly and/or displays a CF card error, try a different CF card. If the problem persists, you may have to try a different brand of CF card. We have found that some of the cheap CF cards are very slow (even if they say they are fast) and do not always run well in our camera. Note: SanDisk® CF cards are the RECONYX recommended brand for use with your camera.*

#### **Cold Weather Problems**

*If your camera shuts down in the cold, it may be too cold for the batteries. Refer to the battery chart on page 6 of this manual for recommended operating temperatures for various battery types. Alkaline batteries do not run well in the cold.*

#### **Batteries Life Less than Expected**

Alkaline and NiMH batteries have decreased life in hot weather. They will run the camera, but they will have decreased run time. It is not unusual to see battery life drop off 50% or more when daytime temperatures are in the 90s or higher. This will not damage your NiMH batteries, their charge just runs down faster.

#### **Camera Stuck in Low Battery Mode**

*If you find your camera in low battery mode, and after putting in a fresh set of batteries it stays in low battery mode when you switch it on, flip the switch off for a second and then back on to reset the low battery circuit. It may then*

come up and say Check Battery (which means the camera tripped a second level of low battery detect). If it does, you must switch the camera off and back on one more time to reset this flag.

**Other Battery Questions**

*If you charged your NiMH batteries and they only read in the 83% - 88% range, it is because rechargeable batteries do not reach a full 1.5 volts - even when fully charged. This is normal. NiMH batteries have a very flat discharge curve. What this means is they run a long time without dropping much in voltage until they reach a point, around the fifty to sixty percent level, where they will drop off very quickly. For this reason it is good to recharge your NiMH batteries when they get down into the sixty percent range.*

If you have a High Output (H.O.) RC60 or PC90, even brand new AA Ultimate Lithium batteries may only read in the 90%-95% range. This is normal.

Fresh Alkaline batteries will read 95% - 99% when new and will run down to mid teens or so – except when cold. When alkalines get cold, their % will drop dramatically, even if they are brand new. Remember, do not run Alkaline batteries in an H.O. camera.

You will also notice that, as your Alkaline batteries run down, your night time range will decrease. If you notice this happening, you can either change your batteries sooner, or run with AA Lithium or NiMH rechargeable batteries. Both Lithium and NiMH tend to run bright through nearly their entire discharge cycle.

**Other**

If you have read this manual and checked our web site, and you still need assistance, please contact us at 866-493-6064 or e-mail at [support@reconyx.com](mailto:support@reconyx.com).

## Warranty & Safety Information

---

### Limited Warranty

RECONYX hardware products are warranted for one (1) year. If during this period, through normal use, a hardware product becomes defective due to defects in materials or workmanship, RECONYX will either repair or replace the product. This warranty is void if a product failure results from accident, abuse, improper use by Buyer, disassembly, or unauthorized maintenance and repair.

Software products are licensed to Buyer under the terms of the applicable RECONYX software license (contained within installation programs). If Buyer wishes to review the software license agreement before purchasing products from RECONYX, a copy of the software license may be obtained by request.

Buyer must obtain a Return Material Authorization (RMA) number from RECONYX before returning any product(s) for repair or replacement. If RECONYX concludes that a returned product is not defective, Buyer will be notified, the product will be returned to Buyer at Buyer's expense, and Buyer may be charged for RECONYX's examination and testing of the product.

This limited warranty is the sole warranty for hardware and software products offered by RECONYX and RECONYX shall not be liable for any amounts for said products except in compliance with this warranty.

### Safety Precautions

Before using the camera, please ensure that you read and understand the following safety precautions. Always ensure that the camera is operated correctly.

The safety precautions noted in this guide are intended to instruct you in the safe and correct operation of the camera and its accessories to prevent injuries or damage to yourself, other persons, and equipment.

### Preventing Malfunction

#### ***Avoid Strong Magnetic Fields***

Never place the camera in close proximity to electric motors or other equipment generating strong electromagnetic fields. Exposure to strong magnetic fields may cause malfunctions or corrupt image data.

### **Avoid Condensation**

Moving the camera rapidly between hot and cold temperatures may cause condensation (water droplets) to form on its external and internal surfaces. You can avoid this by placing the camera in an airtight, resealable plastic bag and letting it adjust to temperature changes slowly before removing it from the bag.

### **If Condensation Forms Inside the Camera**

Stop using the camera immediately if you detect condensation inside the camera. Continued use may damage the camera. Remove the CF card and batteries from the camera and wait until the moisture evaporates completely before resuming use.

### **Warnings**

- Store this equipment out of the reach of children and infants. Accidental damage to the camera or batteries by a child could result in serious injury.
- Be particularly careful to keep the date (coin) battery used in the camera away from children. Seek medical assistance immediately if a child swallows a battery.
- Do not allow water or other liquids to enter the interior of the camera. The interior has not been waterproofed. If the exterior comes into contact with liquids or salt air, wipe it dry with a soft, absorbent cloth. In the event that water or other foreign substances enter the interior, immediately turn the camera's power off and remove the camera batteries. Continued use of the equipment may result in fire or electrical shock. Please consult your camera distributor or the closest RECONYX Customer Support Help Desk.
- Use of power sources not expressly recommended for this equipment may lead to overheating, distortion of the equipment, fire, electrical shock, or other hazards. Use only the recommended power accessories. Any use of non-RECONYX power sources will void the warranty on your camera.
- Do not mix battery types. You may run your camera on Alkaline, Lithium (Pro model only!), or Nickel Metal Hydride (NiMH), but you should NEVER MIX BATTERY TYPES! Damage to the camera can result and your warranty will be voided if you do so.
- Do not place the batteries near a heat source, expose them to direct flame or heat, or immerse them in water. Such exposure may damage the batteries and lead to the leakage of corrosive liquids, fire, electrical shock, explosion, or serious injury.
- Do not attempt to disassemble, alter, or apply heat to the batteries. There is serious risk of injury due to an explosion. Immediately flush with water any area of the body or clothing that comes into contact with the inner contents of a battery. If the eyes or

mouth contact these substances, immediately flush with water and seek medical assistance.

- Avoid dropping or subjecting the batteries to severe impacts that could damage the casings. It could lead to leakage and injury.
- Do not short-circuit the battery terminals with metallic objects, such as key holders. It could lead to overheating, burns, and other injuries.
- Use of batteries not expressly recommended for this equipment may cause explosions or leaks, resulting in fire, injury, and damage to the surroundings. Use only recommended batteries and accessories.
- Avoid using, placing, or storing the equipment in places subject to strong sunlight or high temperatures, such as the dashboard or trunk (boot) of a car. Exposure to intense sunlight and heat may cause the batteries to leak, overheat or explode, resulting in fire, burns or other injuries. High temperatures may also cause deformation of the casing.
- Be careful not to bang the camera or subject it to strong impacts or shocks that could lead to injury or damage the equipment.
- When using desiccant, the following precautions should be followed: Keep out of reach of children, do not eat, and do not inhale desiccant dust. If the desiccant packet tears or breaks, wash your hands if they come in direct contact with the desiccant. Desiccant may cause eye, skin, and mucous membrane irritation. Prolonged inhalation may cause lung damage. Asthma can be aggravated by exposure to desiccant.
- If you know or suspect desiccant has been ingested, seek medical assistance for further treatment, observation, and support if necessary. For eye contact, flush with water for at least 15 minutes. For skin contact, wash affected area with soap and water. For inhalation of desiccant dust, move affected person into an environment with fresh air. For accidental ingestion, drink at least two glasses of water.
- Check your state/local laws concerning the use of this product.

## Copyright & Trademark Information

---

RapidFire™ Instruction Manual Copyright December 2008

RapidFire™ is a trademark of RECONYX.

Other trademarks and registered trademarks referred to in this document:

- BuckView™, CodeLoc™, InstaOn™, NearVideo™, LFT™, and VersaMount™ are trademarks of RECONYX.
- CompactFlash® is a registered trademark of the CompactFlash Association.
- Energizer® is a registered trademark of Energizer Corp.
- SanDisk® is a registered trademark of SanDisk Corporation.
- Windows XP® and Windows Vista® are registered trademarks of Microsoft Corporation.
- Python® locks are a product of Master Lock

All other trademarks and copyrights referred to are the property of their respective owners.



RECONYX, INC  
3828 Creekside Lane, Suite 2  
Holmen, WI 54636  
866-493-6064  
[www.reconyx.com](http://www.reconyx.com)

