

# **UOVISION UM565-SMS 12MP**

**Wireless SMS controlled**

**Digital Scouting Camera**

## ***User's Manual***

# Quick Start

1. Load 12pcs of the new AA alkaline batteries or connect 6 V external power supply. If external power used, the batteries can be inside the camera at the same time


2. Insert the SD card (32GB or smaller) and SIM card (Wireless cameras ONLY). Be sure that the PIN of the SIM card is disabled; (You can disable the PIN of a SIM card via your service provider.) (Wireless cameras ONLY)


3. Slide the power switch to the "SETUP" position to set up the camera;

**Note: When going into the setup mode, allow approximately 10-20 seconds for the camera to acquire a signal.**

4. Press the "MENU" button to enter into the program menu, then press the "up" or "down" arrow buttons for parameter settings as described in the user's manual. Press the "OK" button to save parameter settings and exit;

5. Place the camera at the target area and turn on the camera ( slide the power switch to "ON" ) , the camera will take pictures or videos as preset in step 4;

6. Press the "  " button to capture photos or record a video manually;

7. Press the "  " button to playback the pictures. Use the "up" or "down" arrow buttons to scroll through pictures on the color monitor;

8. To delete an image in SETUP mode, press the "▶" button to review the image and then press the "DEL" button to delete the image.

## Key Notes

- a. "MENU": enter the program menu in preview mode;
- b. "▲" "▼" "◀" "▶": for parameter settings as described in the user's manual.

"▲" is the shortcut to choose "Video", while "▼" for the "Photo".

- c. "OK": save parameter settings and play videos.
- d. "▶": exchange between playback and preview;
- e. "DEL": delete an image
- f. "📷": capture a photo or record a video manually.
- g. Switch: OFF in the left; SETUP in the middle; ON in the right position.
- h. DC plug in diameter: 4.0mm\*1.7mm.

# 1 Instruction

## 1.1 General Description

This camera, is wireless digital surveillance camera, triggered by any movement of humans or animals monitored by a high sensitive Passive Infrared (PIR) motion sensor, and then automatically captures high quality pictures, up to 12MP, varied by different models or records video clips (QVGA and VGA) according to default settings or preset customer settings. The wireless version cameras can send the pictures instantly to your mobile device or e-mail via GSM/GPRS network. You'll be alerted just when the camera is triggered or per custom settings.

It takes color pictures or videos under sufficient daylight. While at night, the built-in infrared LED's take clear pictures or videos (monochrome).

There is a 2.0" color LCD display screen on the camera.

It is resistant against water and snow. The camera can also be used as a portable digital camera.

## 1.2 Camera Body Interfaces

The camera has the following I/O interfaces: USB connector, SD-card slot and external DC power connector.

On the back of camera, there is a lock for theft-proof and an adjuster to change the tilt when mounting on an irregular interface e.g. tree.

Take a few moments to familiarize yourself with the camera controls and displays. It is helpful to bookmark this section and refer to it when reading through the rest of the manual.

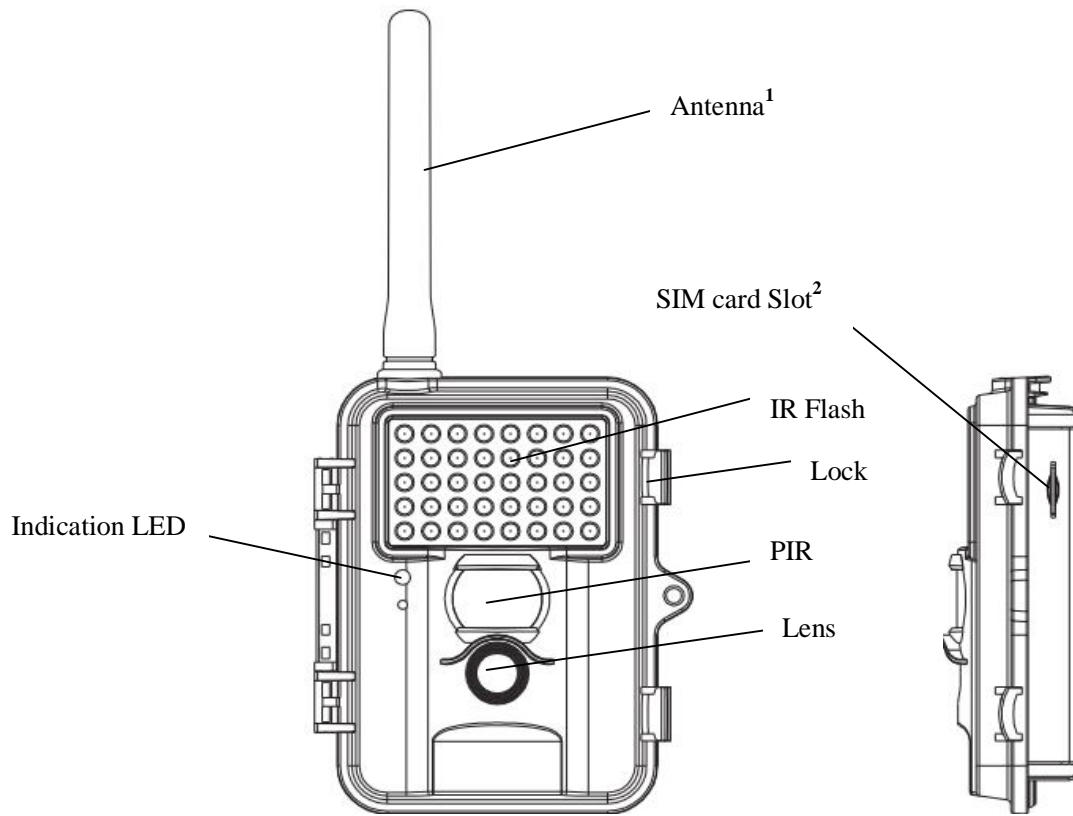


Figure 1: Front View

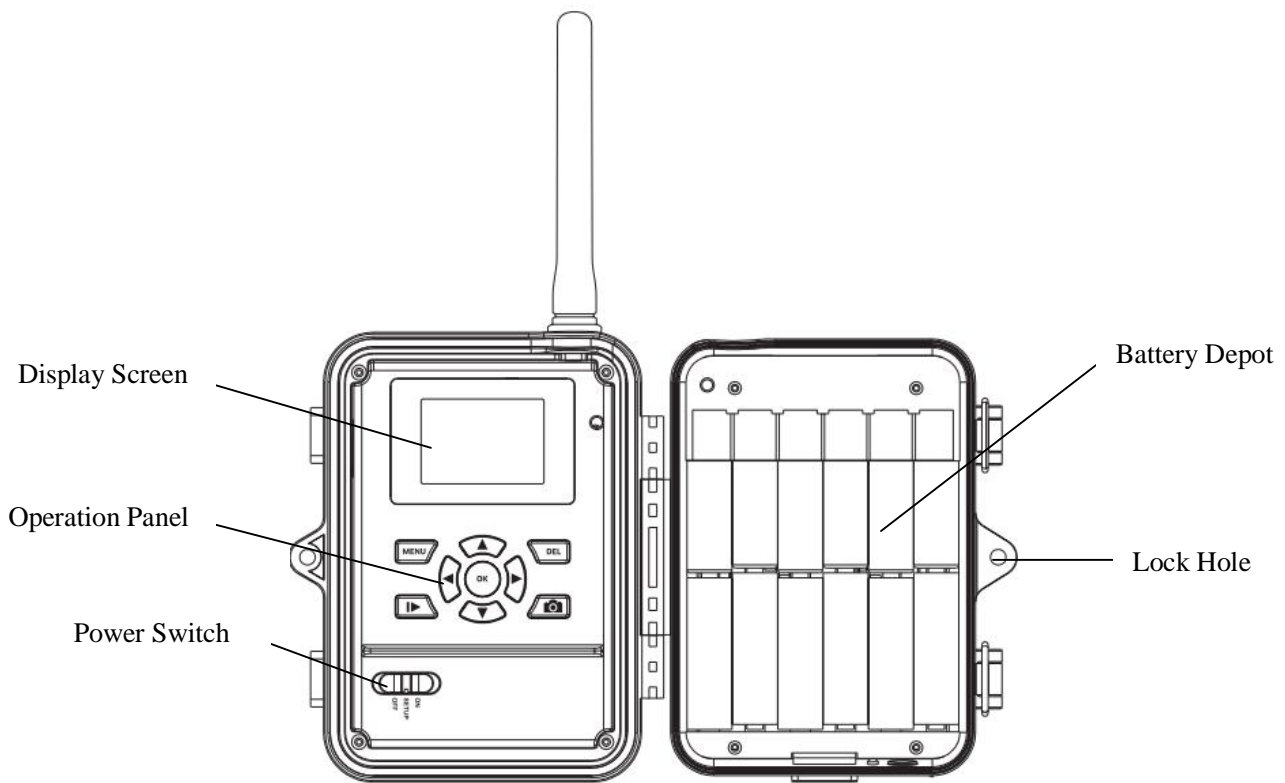


Figure 2: Operation Interface

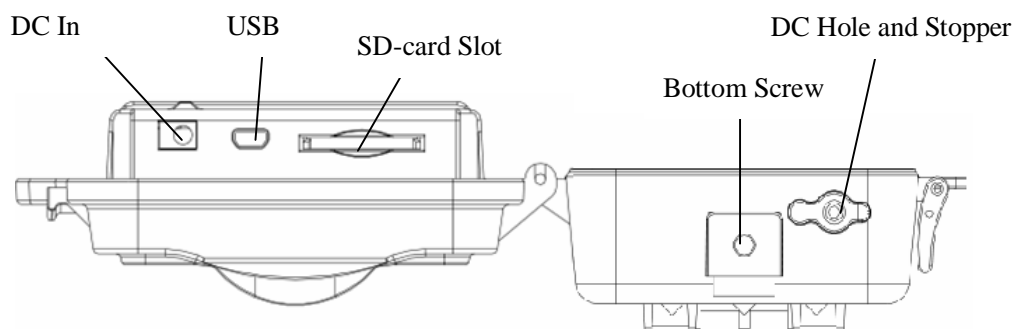


Figure 3: Bottom view

### 1.2.1 Key Notes

- a. **"MENU"**: enter the program menu in preview mode;
- b. **"▲""▼""◀""▶"**: for parameter settings as described in the user's manual.  
**"▲"** is the shortcut to choose **"Video"**, while **"▼"** for the **"Photo"**.
- c. **"OK"**: save parameter settings and play videos.
- d. **"▶"**: exchange between playback and preview;
- e. **"DEL"**: delete an image
- f. **"📷"**: capture a photo or record a video manually.
- g. Switch: OFF in the left; SETUP in the middle; ON in the right position.
- h. DC plug in diameter: 4.0mm\*1.7mm.

## **1.3 MMS function(For Wireless type ONLY)**

Wireless version camera can send pictures instantly to your mobile device via GSM/GPRS network. You'll be alerted just when a picture or video has been taken. The camera sends MMS message through GPRS network, so before using this function, you need to open GPRS service from your service provider. It supports four band : 850MHz, 900MHz, 1800MHz and 1900MHz. Pls insert SIM card correctly.

Be sure that the PIN of the SIM card is disabled before inserting the SIM card. (You can disable the PIN of a SIM card via your mobile phone. Then reinsert the card into your camera).

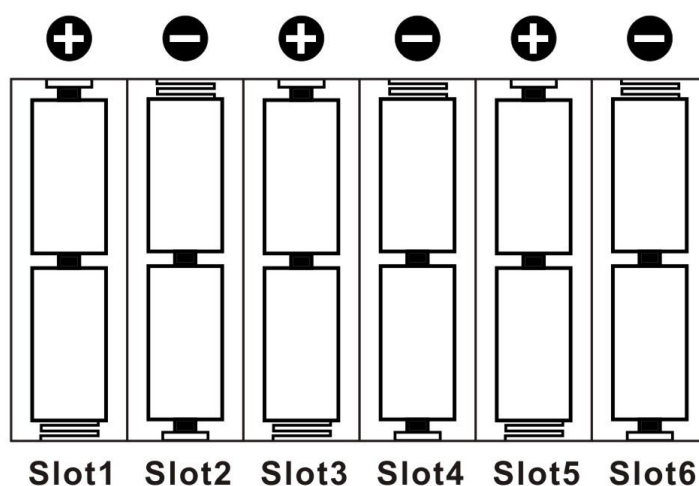
## 2. Quick Start Guide

### 2.1 Power Supply

To supply power for the camera 12 size AA batteries are needed. Confirm that the power switch is in the **OFF** position; load the fully charged batteries into the pack according the polarities signs shown below. The following batteries with 1.5V output can be used:

1. High-density and high-performance alkaline batteries (Recommended)
2. Rechargeable alkaline batteries
3. Rechargeable NiMH batteries

There are 6 battery slots. Slot 1 and 2 form one group and is marked "1", slot 3 and 4 form the other group and is marked "2", while slot 5 and 6 form the other group and is marked "3". Single "group" of batteries is needed to supply power to the camera, but both can be used and is recommended.



### 2.2 Insert the SD-card and the SIM-card

Open the bottom cover. Insert an SD-card into the card slot with unmarked side upwards. Please note that the SD-card is on the "write" (not locked) position otherwise the camera will not function correctly.

**NOTE:** Please DO NOT USE the Micro SD card with adapter. Many micro SD cards are not compatible with trail cameras

When using MMS/SMS/E-mail functions, be sure to insert a SIM-card into the SIM-card slot with angle in the upper left.



## 2.3 Power on and Enter into the ON Mode

Before switching on, please pay attention to the following:

1. Avoid temperature and motion disturbances in front of the camera such as a big leaf, curtain, air-conditioner, air outlet of the chimney and other heat sources to prevent from false triggering.
2. The height from the ground for placing the camera should vary with the object size appropriately. In general, **three to six feet** is preferred.

Slide the power switch to the **ON** position to power on the camera and enter into the **ON** mode.


## 2.4 Enter into the SETUP Mode

Slide the power switch to the **SETUP** position and enter into the **SETUP** mode. There are some functions in **SETUP** mode: custom settings, manual capture, preview or send MMS manually.

### 2.4.1 Custom Settings


Press **MENU** on the user interface to enter into the menu setting. The camera can be adjusted to manually customize the camera settings which display on the LCD screen on the camera. The detailed operations will be described in the "Advanced Operations" chapter.

### 2.4.2 Manual Capturing

You can press  to manually capture photos or record a video.

### 2.4.3 View Images or Videos

Use LCD screen to view the captured images or videos:

Press  to view images, the latest image or video will be shown in the LCD screen on the camera. Press **UP** to view the previous image and press **DOWN** for the next.

The detailed operations like deleting images or videos will be described in the "Advanced Operations" chapter.

### 2.4.4 Send MMS(Wireless cameras ONLY)

Please refer to the instruction book "Guide on GSM Setup".

## 2.5 Power Off

Slide the power switch to the **OFF** position to power off the camera. Please note that even in the **OFF** mode, the camera still consumes a small amount of battery power. Therefore, please remove the batteries if the camera is not in use for some time.

## 3 Advanced Operations

### Settings Menu and Default Settings

To view the camera settings menu, switch the camera to **SETUP** mode and press **MENU**, the main menu and the default settings are under below charts:

#### Main menu




Setting Items		Description
CAM	Camera Mode	Choose Photo or Video
	Photo Size	Choose the image size, 5MP,8MP,12MP
	Photo Burst	Choose the continuous shooting numbers after each triggering.
	Video Size	Choose the video size
	Video Length	Set the video length as of required
	Video Sound	Not Available
PIR	Sensitivity	<b>High, Low, Normal and Off</b> selectable
	Trigger Interval	The duration the camera will stop detecting motion after each triggering.
	Time Lapse	Time lapse function defines the camera records/captures automatically every preset time period (5seconds~8hours), which doesn't work if it is set to Off.
	Start-Stop	Start-stop " <b>On</b> " means that the camera works only during that preset time; Start-stop " <b>Off</b> " means that the camera works round the clock.
GSM (Wireless cameras ONLY)	Send Mode	There are 3 send modes: <b>Daily report, Instant and OFF.</b>
	Send Via	<b>MMS and GPRS</b> selectable
	Send To	Defines to where the MMS to be sent, <b>Phone, Email or Both.</b>
	Recipients	Press "Enter" to review what you have set to receive the MMS or GPRS pictures.
	Location	Press enter to get the Longitude& Latitude information.(show only in the display screen)
	Download Tool	Pls refer to the Advanced Chapter for details
SYS	Set Clock	Enter to set the date and time
	Time Stamp	Choose "On" or "Off" to show the time

		stamp on the picture or not.
	<b>Flash Power</b>	50% = 20 ft./6m, 100% = 40 ft./12m
	<b>Password</b>	The default password is <b>0000</b> . Choose OFF to stop this function.
	<b>Language</b>	English (Preset) , we provide the choice for customer to choose the language, pls contact your distributor for assistance.
	<b>Beep</b>	Customer can choose ON/OFF when operating the cameras.
	<b>Overwrite</b>	ON/OFF, if choose "ON" the camera writes off the previous taken pictures when the SD card is full and continues to record new pictures/videos , thus, the SD-card is recyclable, customer needs not to change SD card frequently.
	<b>Default Set</b>	Restore all customer settings to default values.
	<b>Format</b>	Format the SD-card.


Press **LEFT** or **RIGHT** and **UP** or **DOWN** to select the desired options, And then press **OK** to save.

## 4 Playback

### 4.1. Viewing Photo or Video

- Switch to **SETUP** mode;
- Press  to view the latest picture (or video) in LCD screen on camera;
- Press  to start playing the video clips;
- Press  again to stop playing and return to playback mode.
- Press **UP** to view the next picture (or video) and **DOWN** for the previous.

### 4.2. Delete Photo or Video

- Press  to view the image (or video) which to be deleted;
- Press **DEL** button;
- Press **LEFT** or **RIGHT** to select Yes to execute or No to Exit;  
Please note that after deleting a picture or a video file, the deleted files can't be restored!

### **4.3. File Numbering**

Images and videos are saved in the pre-named folder. File numbering continues by adding one to the last number for each new image or video. Saving names are IMAG0001.JPG or IMAG0001.AVI. Through the suffix you can distinguish whether the file is an image (with suffix .jpg) or a video (with suffix .avi).

## Appendix I: Technical Specifications

<b>Picture Resolution</b>	12MP, 8MP, 5MP, 3MP
<b>Lens</b>	F/NO=3.0 FOV(Field of View)=52°
<b>IR-Flash</b>	50% = 6m, 100% = 12m
<b>Display Screen</b>	2.0" LCD
<b>Memory Card</b>	From 8 MB to 32GB
<b>Video Resolution</b>	VGA, QVGA
<b>PIR Sensor</b>	Multi Zone
<b>PIR Sensitivity</b>	Adjustable (High/Normal/Low)
<b>Trigger Time</b>	1.2s
<b>Weight</b>	0.35 kg
<b>Operating Temperature</b>	-20 - +60°C
<b>Interval</b>	1s – 60 min.
<b>Photo Burst</b>	1–3
<b>Video Length</b>	1–60s
<b>Power Supply</b>	12pcs AA 1.5V
<b>Stand-by Current</b>	< 0.25 mA (<6mAh/Day)
<b>Power Consumption</b>	600 videos (interval=5min,video length=10s) ; >800 MMS(use 12*AA batteries)
<b>Low Battery Alert</b>	LED Indicator, SMS alert
<b>Sound Recording</b>	Not Available
<b>Mounting</b>	Rope/Belt/Python lock
<b>Dimensions</b>	140 x87 x55 mm
<b>Operation Humidity</b>	5% - 90%
<b>Security authentication</b>	FCC, CE, RoHS

\*without battery

## Appendix II: Parts List

Part Name	Quantity
Digital Camera	One
USB Cable	Not Available
Belt	One
User Manual	One
Antenna	One

The camera manufacturer provides 12 months of warranty service for this product against manufacturing defects or malfunctions. If your camera fails to function under normal use within 1 year, the camera manufacturer will repair or replace the camera at no charge. The **purchase receipt must be included from an authorized retailer to validate the warranty**. Improper use of the camera resulting in damage is not covered by this warranty.

The camera manufacturer can provide repair service, after the warranty expiration. The customer will be responsible for any charges on parts, labor and shipping costs. Please contact the manufacturer for more details.

Please remove the batteries when not in use. Warranty is not covering battery leaks or battery related malfunctions.

### Declaration of Conformity to Directive 1999/5/EC

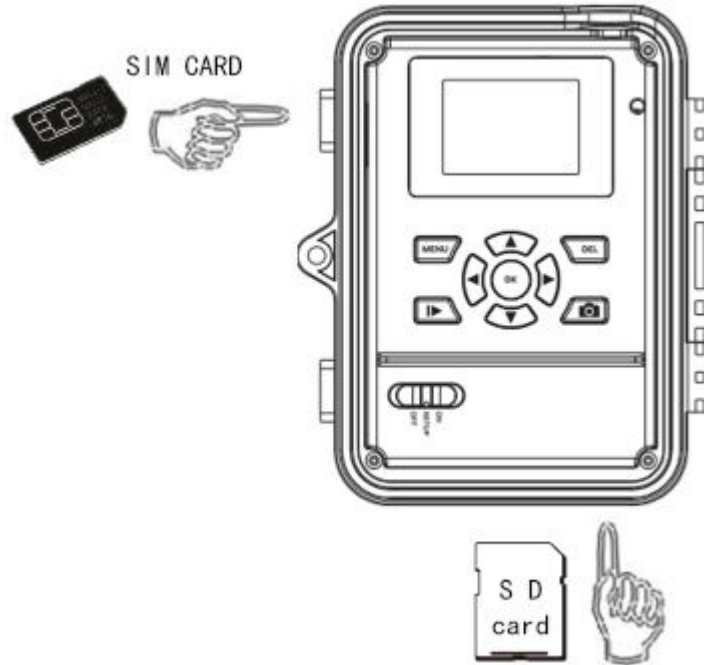
CE Caution :

Hereby, the manufacturer declares that this camera is in compliance with the essential requirements and other relevant provisions of Directive 1999/5/EC. Pls ask for your distributor for a copy of the **Declaration of Conformity to Directive 1999/5/EC**.

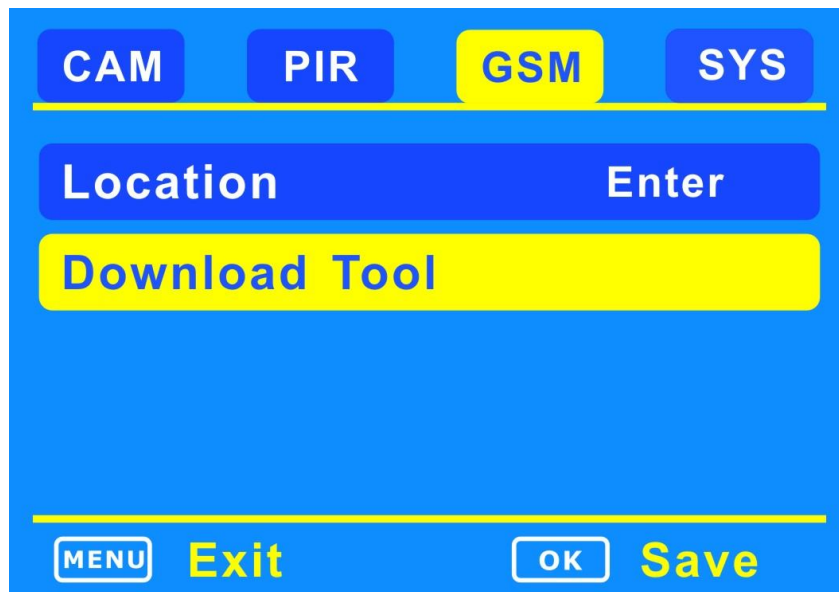
# *Guide on GSMSetup*

## -- for Wireless Cameras

1. Insert a SD card and a SIM card into the camera.



2. Switch the camera to SETUP position, and press "MENU".
3. Go to the MENU → GSM →Download Tool.



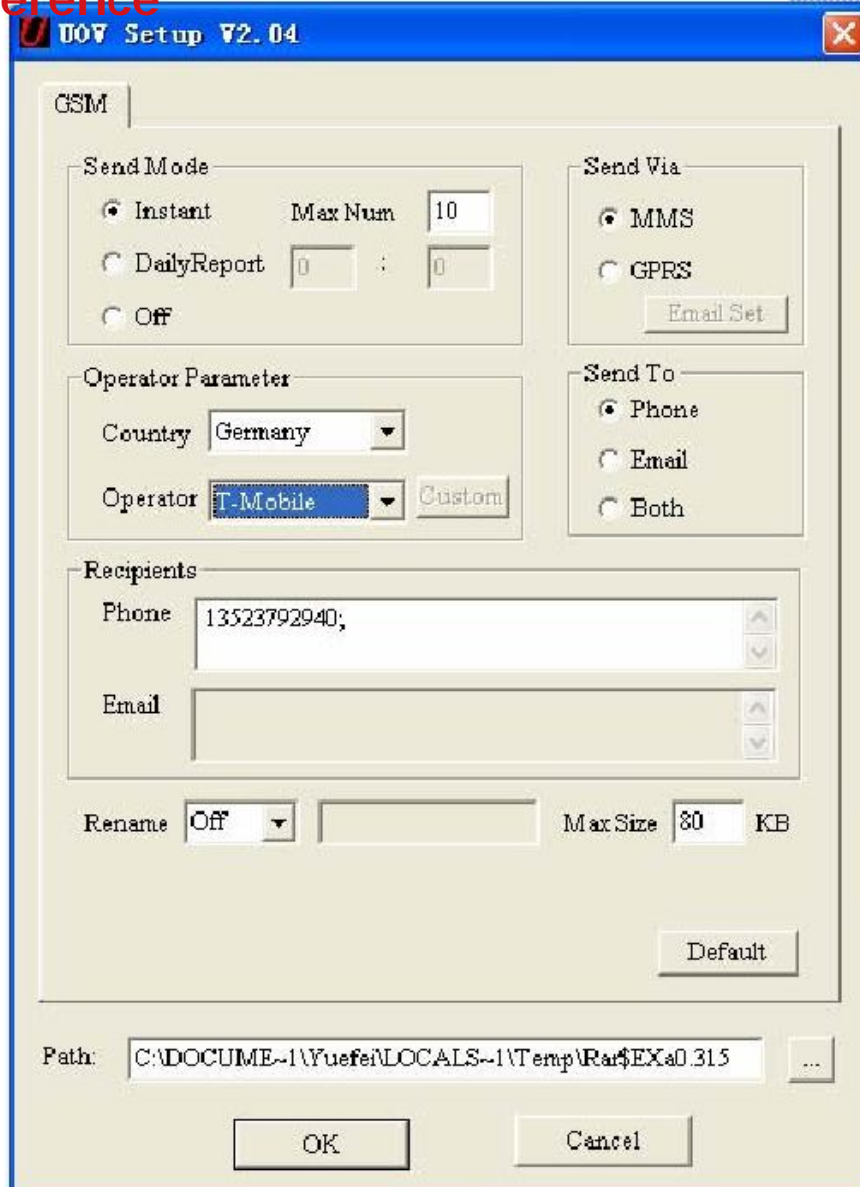
4. Press OK to download the "GSMSETUP.ZIP" into



the SD card.

5. Use a computer to unzip the ZIP file, and then edit the "GSMSETUP.exe" file.

See the below chart for reference



## I. Send Mode

**Manually send:**

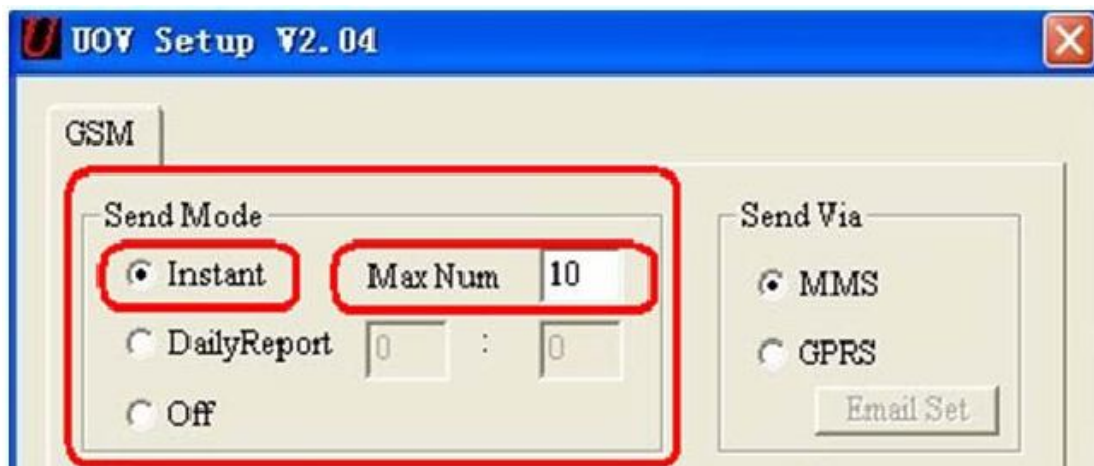
Press "▶" playback button to review the desired image, then press "MENU" button. Choose "Send" and press "OK". The camera starts to send the image from step 1 to step 10, After the LCD screen reminds "Send successfully", the image has been sent to the preset phone numbers and E-mail addresses.



**Instant:**

- a. If capture a picture the camera will send the picture instantly;
- b. If a video, it sends a SMS to tell the ordinal number of the video get captured instantly.

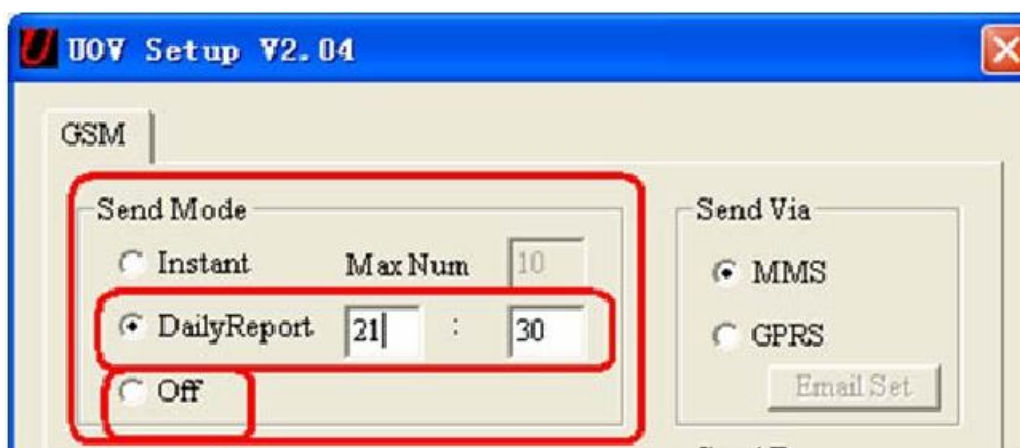
Max Num: the maximum MMS qty within 24 hours.  
10 means the user will receive 10 MMS within 24hours; **if "0"it means the cameras send MMS continuously and non-stop.**



### Daily Report:

The camera sends a SMS to inform how many pictures/videos get captured during the past 24 hours at the pre-set time. If the time were 21:30PM as in the attached picture, the user will get the report at 21:30PM.

- If under photo mode, the SMS tells the accumulated picture qty together with the latest captured picture.
- If video mode, the SMS tells the accumulated video qty only.
- Off—close the GSM function.

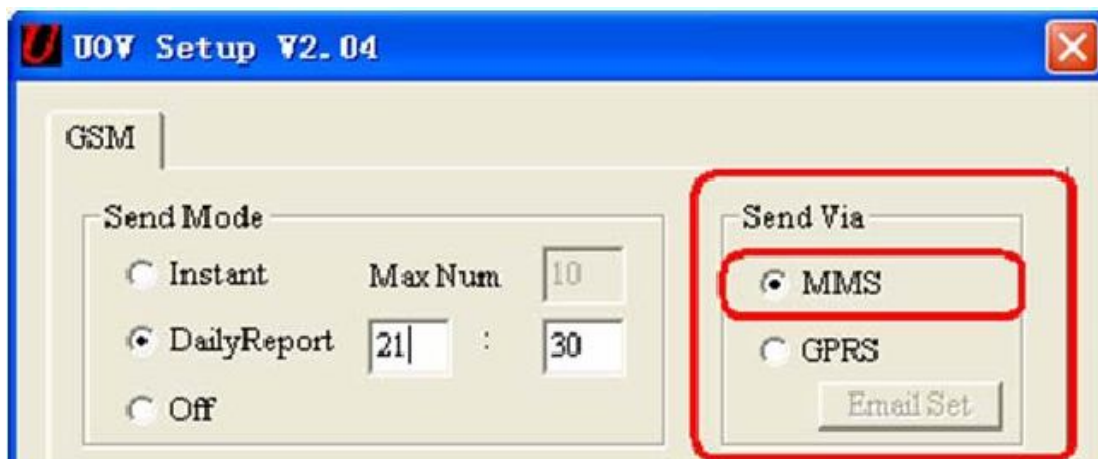


## II. Set Send Via

The camera provides two solutions to send the pictures to the desired phone number and email address via MMS and GPRS.

### a. MMS

If MMS selected, pictures would be sent to the preset phone numbers, (Maximum 4 numbers allowed) and email addresses (Maximum 4 addresses allowed) or both phone number and email address. (Use semicolon ";" between each phone number and email address).



### b. GPRS

If GPRS selected, pictures could be sent from one email address to the one or multi email addresses via GPRS network.



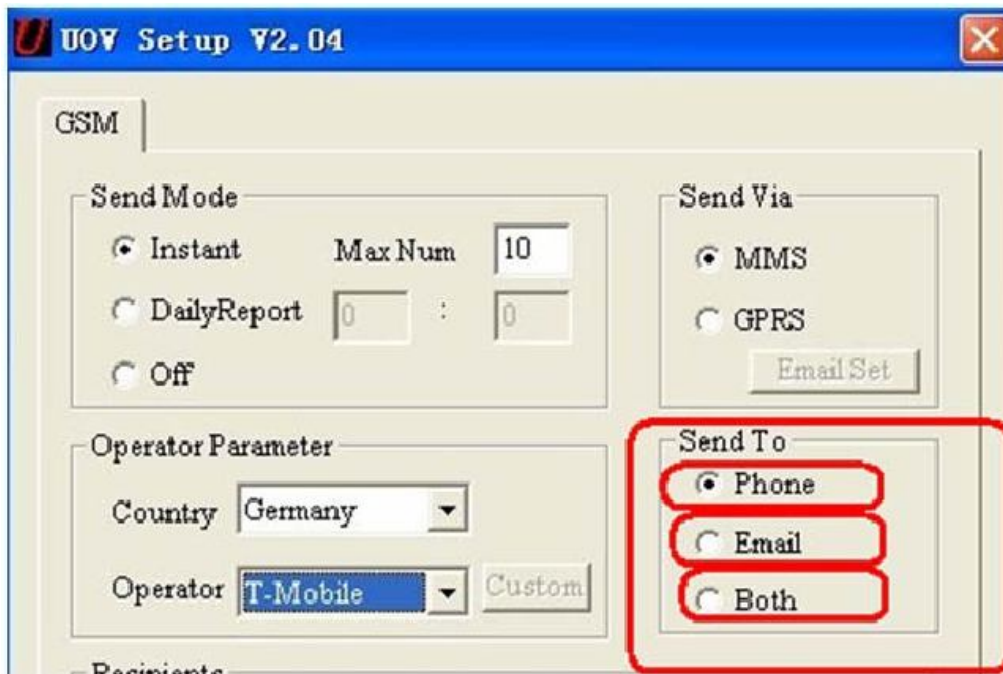
If choose the GPRS, there is a reminder to ask the user to set the Email; Click the Email Set button, there would be another Dialog BOX as shown below:



Complete the above information and Click "OK" to save. And this email address would be the "Sender".

### III. Send to

Send to means the destinations where the MMS/GPRS goes to.

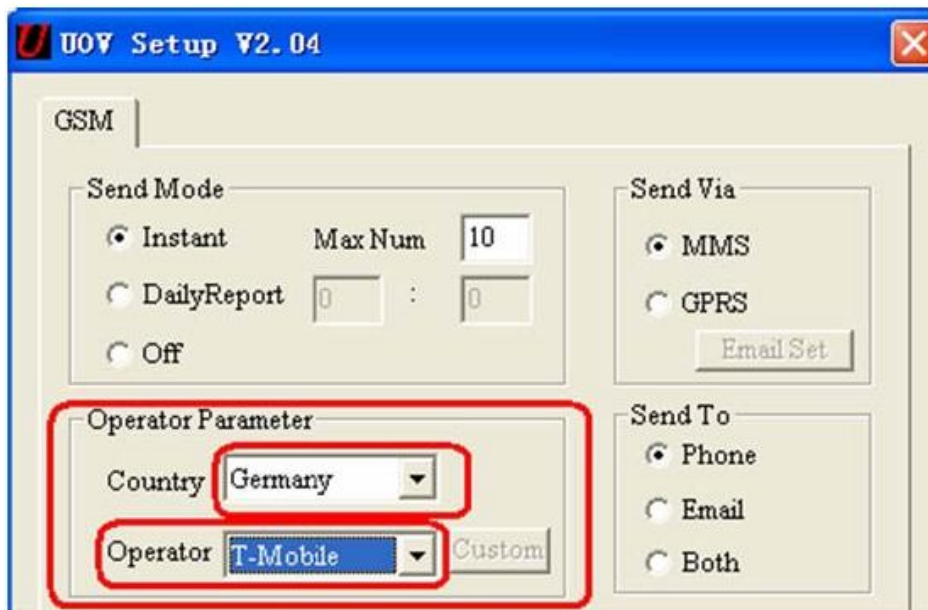


- a. Phone: pictures to phone numbers (MAX 4 numbers.)
- b. Email: pictures to email addresses (MAX 4 emails.)
- c. Both: pictures to both phone number and email address. But these function only feasible for MMS, not feasible for GPRS. GPRS pictures can only be sent to email addresses.

### IV. Operator Parameter

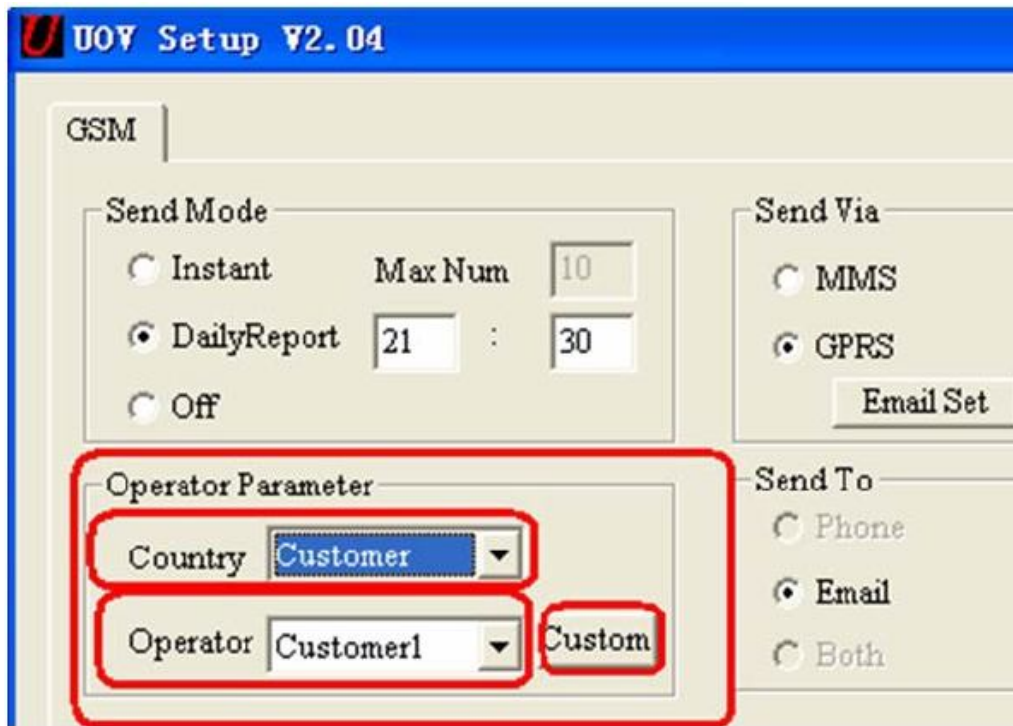
- a. The manufacturer has pre-set the parameters of some operators worldwide into the camera, user need just to select one of the operators, and the camera will work and send MMS information

according to the preset phone number or email address.

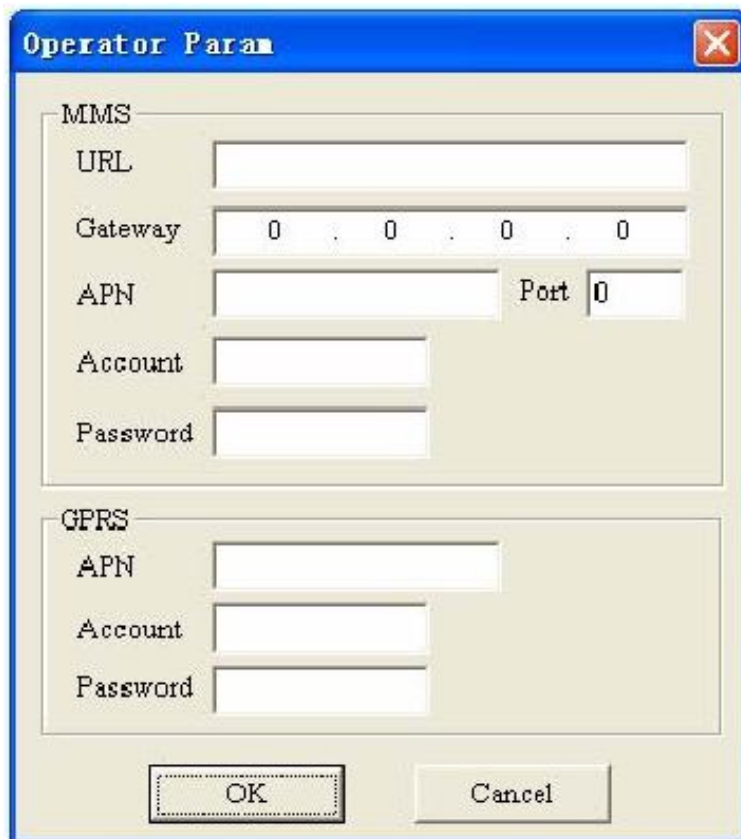


The selected country is Germany, and the operator is T-mobile, the camera will work and send MMS information according to the preset phone number or email address.

b. If the user can not find the country information in the preset software, the user need to do customer settings and contact local operators to fill in the operator's information.



Click the "Custom", there would be a Dialog box appears as below.





Pls complete the above columns and click OK to save the settings. This allows 3 operators' information. Take Germany T-MOBILE for example.



The image shows a dialog box titled "Operator Param" with a close button in the top right corner. It is divided into two sections: "MMS" and "GPRS".

**MMS Section:**

- URL:
- Gateway:
- APN:  Port:
- Account:
- Password:

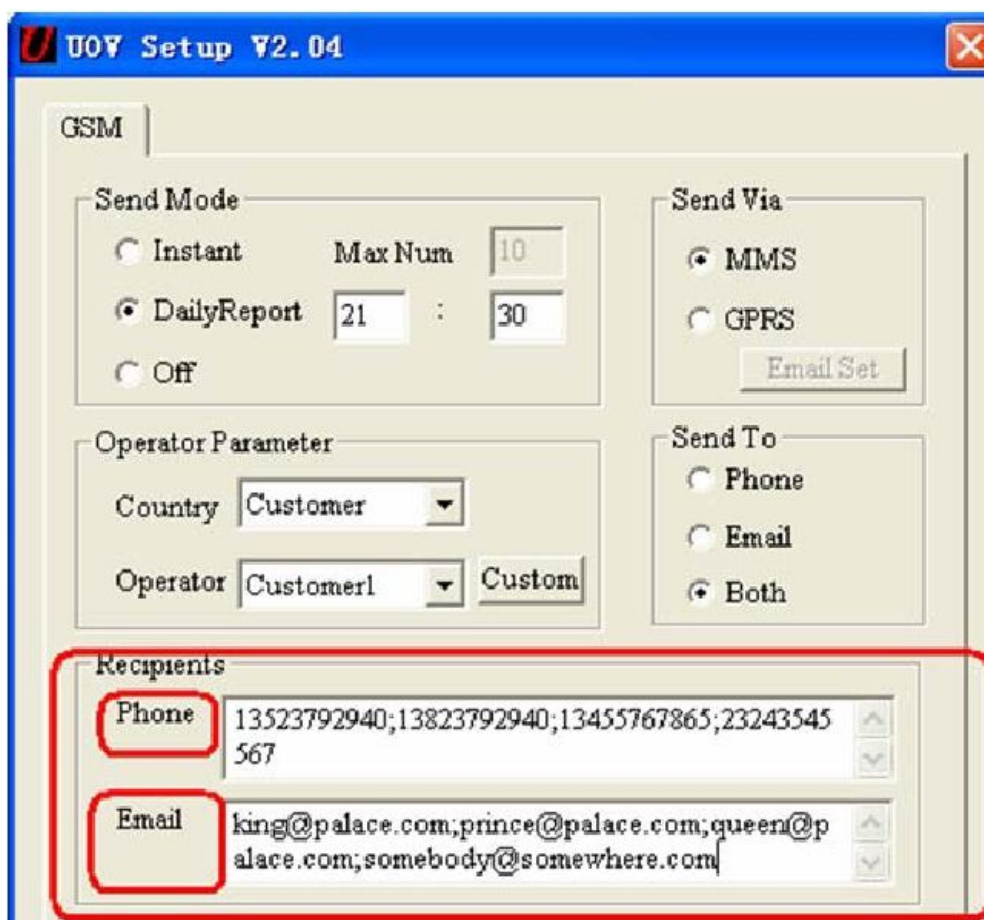
**GPRS Section:**

- APN:
- Account:
- Password:

At the bottom of the dialog box are two buttons: "OK" and "Cancel".

## V. Recipients

Recipients mean where the pictures goes to, Phone number or email address. The recipients allow 4 phone numbers and 4 email address, use semicolon ";" between each phone number and email address. This camera not allows space between each phone number; just continue to key in another phone number after the semicolon";".



## VI. Rename and Max Size

Rename: the user can edit the camera within 8 letters. The renamed contents will appear in the Pictures taken by after Renamed cameras.



Max size: the user can change the digits between 35KB~120KB. If any digit be keyed in out of the allowed range (35KB~120KB), the system will remind the user to change.



## VII. Generate File

Save the edited "**GSM SETUP.exe**", and the file "PROFILE.BIN" is generated in the designated place. Copy the file "PROFILE. BIN" to a SD card and insert the SD card to a wireless camera.

## VIII. Update

Switch the camera to "**SETUP**", after 2~3s, the camera will remind "**update success**".

## Note:

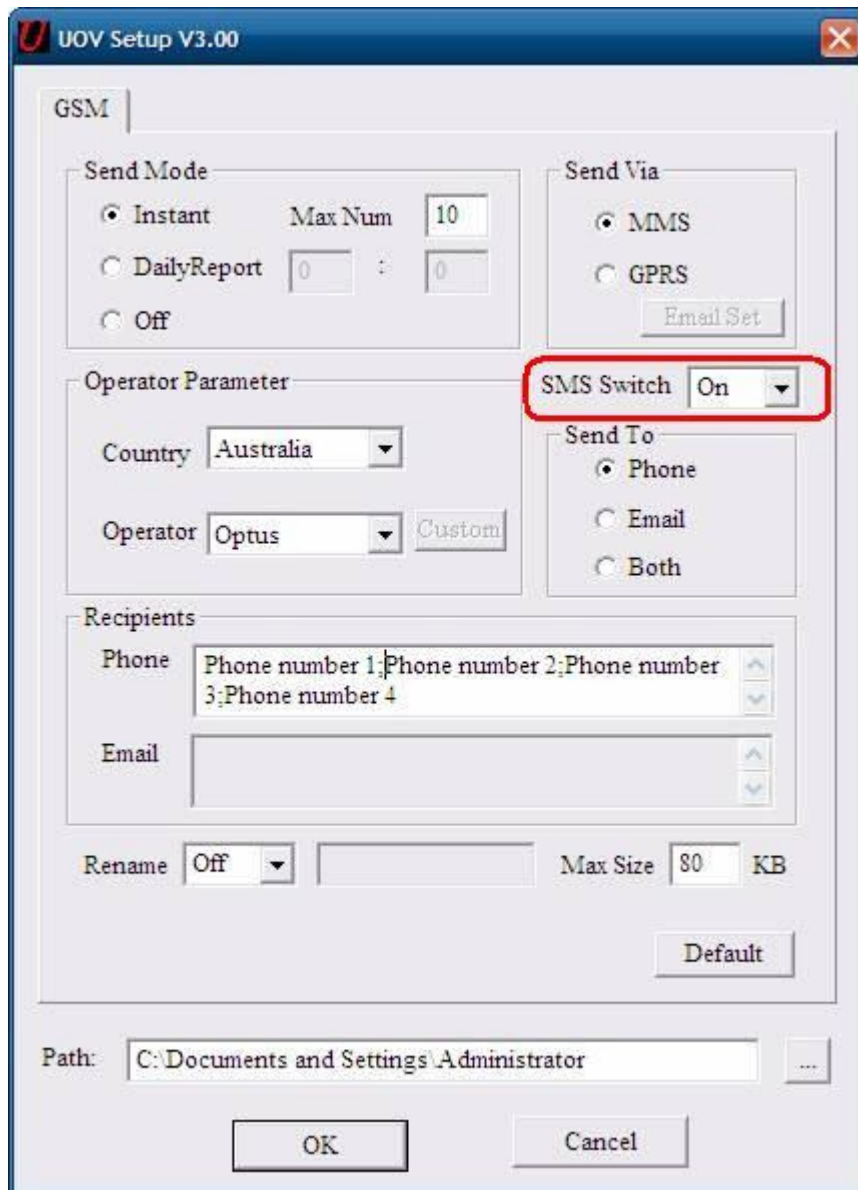
1. MMS is sent via a GPRS network, be sure to open the GPRS service by your SIM card. Our device supports four bands: 850MHz, 900MHz, 1800MHz and 1900MHz.
2. Be sure to open the GPRS service for both the camera and your cellular receiving phone.
3. There is a max limit on the number of pictures sent daily to your phone. Please check the MAX MMS number in "Instant" mode and get the desired number of pictures.
4. The signal strength of mobile phone network may vary, which may lead to failures on sending a MMS. Be sure the antenna is securely connected and proper GSM network coverage is available.
5. In SETUP mode, the camera will shut down automatically after 3 minutes without further operation. Please turn on the power again for new input.

## SMS Control Function

This camera can be controlled by sending SMS. The users can edit SMS commands to set Photo/Video mode; acquire pictures; add/delete email addresses or phone numbers of recipients; show camera's latitude and longitude.

1. The SMS switch.

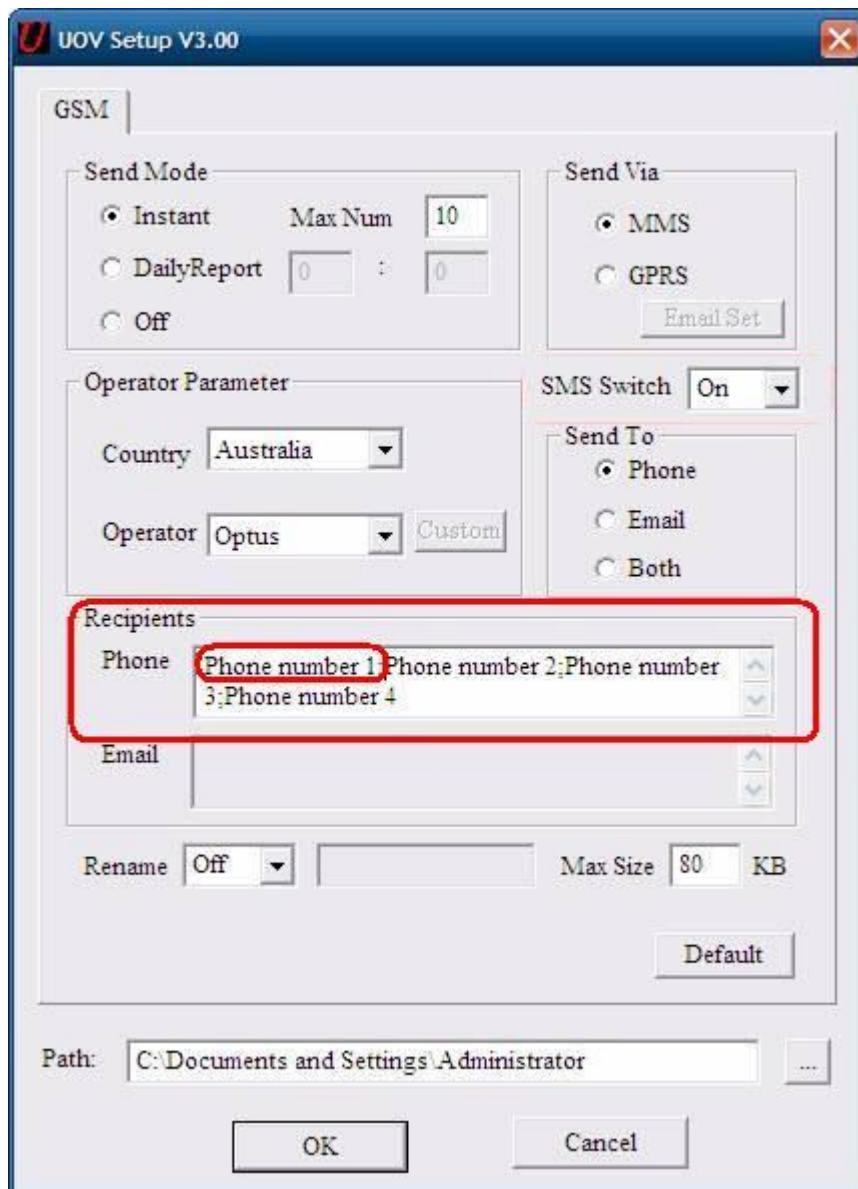
In order to use the SMS control function, the user need to set the SMS switch to "On" position firstly.



2. The master phone number is the "Phone number 1".

The master phone number has the right to delete/add the subordinates (Phone number 2/3/4, and all Email addresses).

Both the master and the subordinates have the rights to edit the SMS Command Orders (Listed as below) to control the camera.



### 3. Preparation.

If want to use the SMS control function, be sure to turn on the switch to SETUP and wait until the camera finish searching network before entering into the "ON" mode every time after changing batteries.

## SMS Command Order List

ACTION	SMS Command Order
Acquire Pictures	#500#
Get Location	#510#
Wireless On (active)	#200#ON#
Wireless Off (sleeping)	#200#OFF#
Turn Off the PIR sensor	#320#OFF#
Turn On the PIR sensor	#320#ON#
Set Photo Mode	#310#P#
Set Video Mode	#310#V#
Add Phone Number	#140#1#phone number# (Master ONLY)
Delete Phone Number	#140#0#phone number# ( Master ONLY )
Add Email Address	#141#1#email address# ( Master ONLY )
Delete Email Address	#141#0#email address# ( Master ONLY )

### Remarks:

#### Examples:

1. Acquire Pictures: Send SMS "#500#" to acquire pictures, the camera will capture a picture immediately and send it to the email addresses and/or phone numbers in recipients as preset in "Send to".
2. Get Location: Send SMS "#510#" to get the longitude and latitude of the camera.
3. Wireless ON/OFF: " #200#On#" the camera will send MMS/Email as preset programming; " #200#Off#" the camera can only send MMS/Email manually under Setup mode, the camera will not either send MMS/Email when triggered by motion or Time lapse, or send "Daily Report", and will not respond any SMS command except "#200#On#".

## Controlling your camera using Android APP


You can control many of the basic functions of your camera from your cell phone by sending it codes via android APP or text message. You can control the following functions on your camera via SMS.

- Set Camera/Video Mode
- Acquire pictures
- Add/delete e-mail addresses or phone numbers of recipients
- Show the camera's altitude and longitude

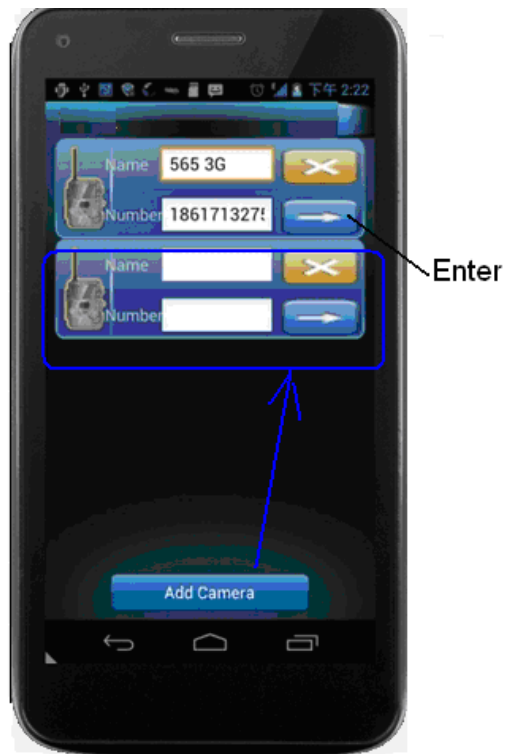
(IMPORTANT NOTE: the **SMS switch** MUST be set to **ON** in the **NET set-up** for the SMS function to work.)

The person who has control of this function (master phone number) is the person who is in position 1 in the **NET set up** in the phone number list. This person can delete/add the subordinates of phone numbers 2, 3 and 4. Both the "master phone number" and the subordinates have the rights to edit the SMS command orders to control the camera.

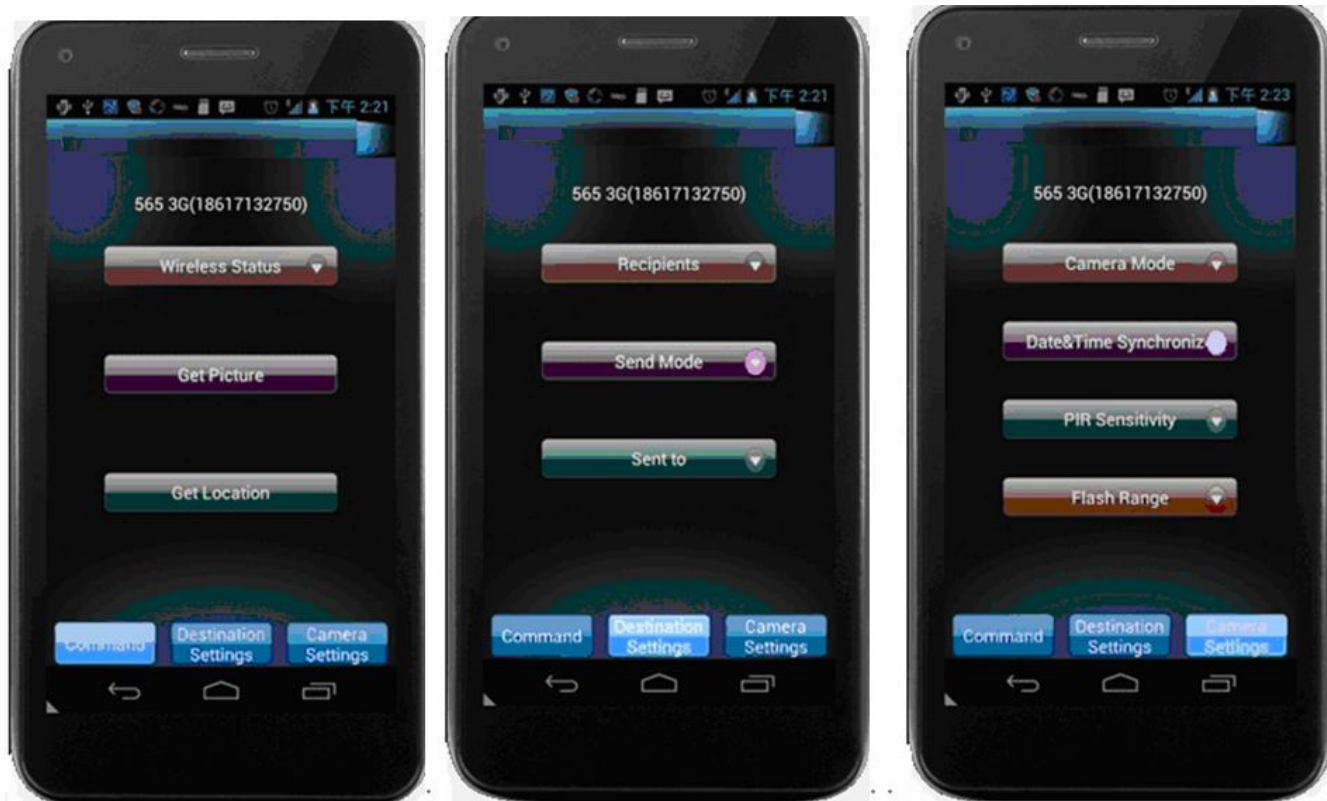


Please install the android APP  to your smart phone. Below pictures will show you how to use it.





There are 3 main panels as below. Slide the phone screen to switch between the panels.



Note: If you set **Wireless Status** to **OFF**, you will not receive photos or Daily reports to your phone or e-mail. You also can't get any response of other SMS commands. Just **Wireless ON command** can be responded when the Wireless Status is **Off**.

