



# **Glory 4G LTE (Email Version)**

## **Scouting Camera Instruction Manual**



(Model No. L4-E)

# Content

1 Product Introduction.....	1
1.1 General Description.....	1
1.2 Camera Overview.....	2
1.3 Camera Button instruction.....	4
2 Quick start guide.....	5
2.1 Installing the batteries.....	5
2.2 Installing the SD card.....	6
2.3 Insert the SIM card.....	6
2.4 Setting map.....	7
2.6 Send a test photo.....	7
3 Customizing camera settings.....	9
3.1 Menu Settings.....	9
3.2 Download U Set.....	13
3.3 Setup with computer.....	14
4 Auxiliary power.....	21
5 SMS commands.....	21
6 Mount tips.....	23
Appendix I : Technical Specifications.....	26
Appendix II : Parts List.....	28

# 1 Product Introduction

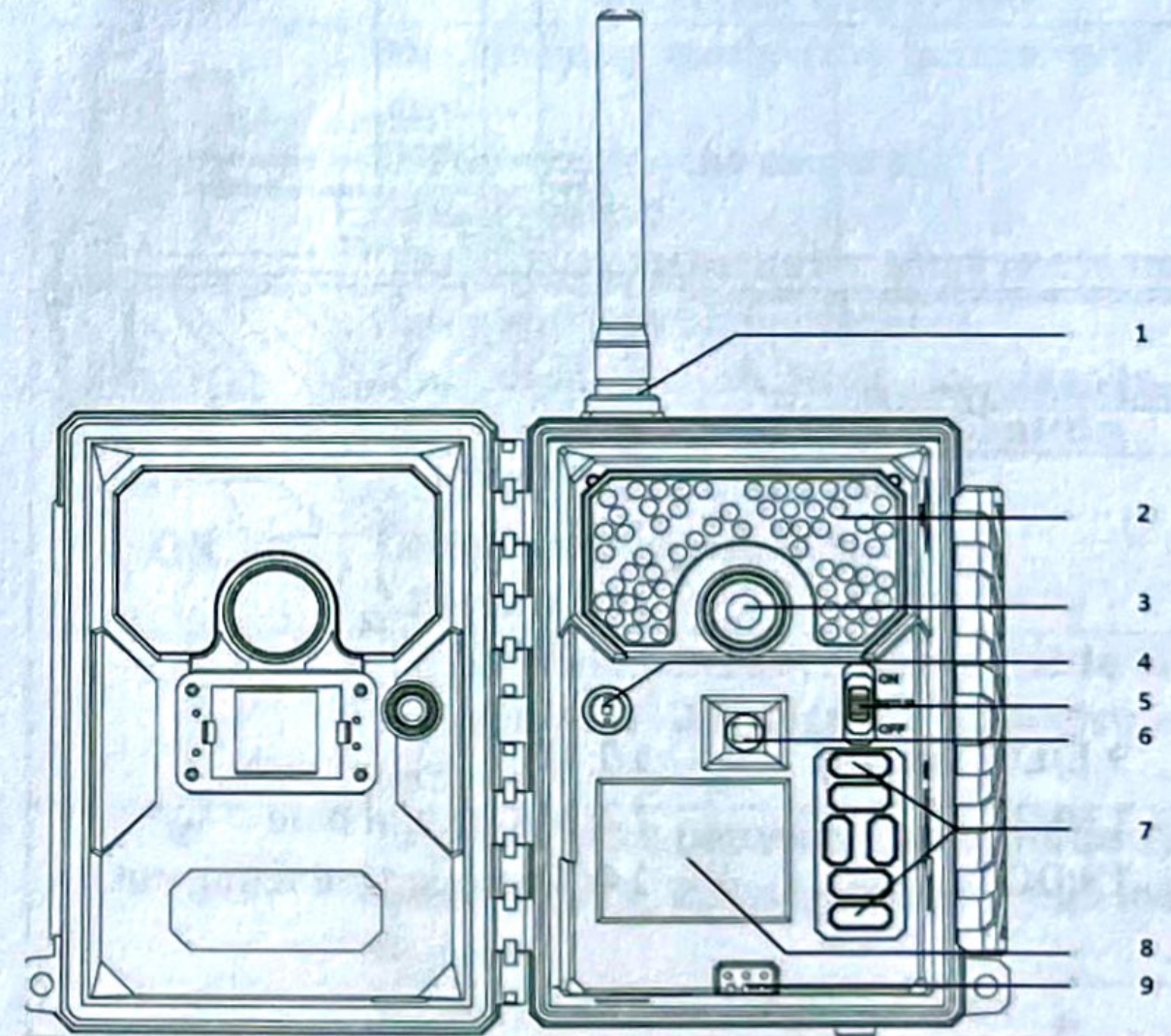
## 1.1 General Description

Congratulations on your purchase of Glory LTE Email Version scouting camera. Glory LTE Email Version is a powerful and reliable performance wireless camera.

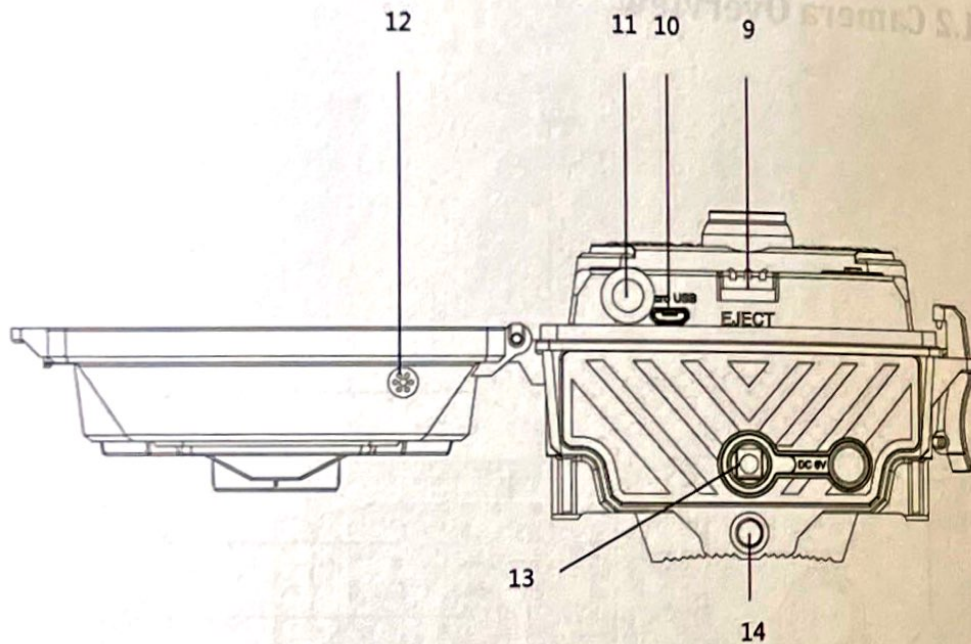
### Features:

- 20MP invisible IR 4G LTE camera;**
- 1080P H.264 video with audio;**
- 0.6s trigger speed;**
- 4G LTE network, faster transmission speed;**
- Video/Full size picture transmission;**
- Remote control via SMS;**
- Support 1-10 burst photos;**
- No glow black LEDs with 15m range;**
- Time lapse, accurate to seconds**
- Camera rename**
- SD card overwrite to ensure cycle use**
- 12AA batteries**

## 1.2 Camera Overview




- |                     |                          |
|---------------------|--------------------------|
| 1: LTE main antenna | 2: Black vision IR flash |
| 3: Lens             | 4: Light sensor          |
| 5: Power switch     | 6: PIR sensor            |
| 7: Key board        | 8: HD TFT screen         |



- 9:EJECT Button                      10: USB  
 11:MIC                                      12: MIC sound hole  
 13:DC                                        14: Three-legged fixing nut

Fig 1 Operation Interface

### 1.3 Camera Button instruction

Button	Function description
	<b>ON:</b> Working mode (the screen will power off); <b>SETUP:</b> Setting the camera; <b>OFF:</b> Power off (Please remove batteries when not in use);
<b>MENU</b>	<b>Entry and Exit</b> of main menu; Also used as an <b>Exit</b> in deeper menu structure, often used with <b>OK button</b>
<b>OK</b>	1.Entry and Exit of <b>playback</b> ; 2. <b>confirm</b> an operation; 3. <b>Enter</b> a tab;
▲	1.Quick switch between <b>photo mode</b> and <b>video mode</b> ; 2.Navigation through menu options;
▼	1.Quick switch between <b>photo mode</b> and <b>video mode</b> ; 2.Navigation through menu options;
◀ (QUICK)	1. <b>Entry and Exit</b> of Quick Viewing; 2.Navigation through menu options;
▶ (SHOT)	1.Navigation through menu; 2.Shutter in <b>photo mode</b> ; 3.Record & Stop in <b>video mode</b> .

## 2 Quick start guide

### 2.1 Installing the batteries

This camera can function on 12AA batteries.

Pay attention to the (+) or (-) molded into each sleeve to determine if you insert the positive or negative end into the sleeve first. Negative battery terminal always contacts the spring.

Note:

- **Do not mix different types of batteries**
- **Do not mix the old and new batteries**
- **Recommend high-density and high-performance batteries, such as Alkaline or Lithium batteries.**
- **Remove batteries when not in use to prevent leakage!**

### 2.2 Installing the SD card

To be able to power up the camera you will need to install a SD card in the slot in the bottom of the camera. You can use any SD card size up to 32GB. You must have the SD card in the camera to be able to turn the camera on and set it up.

### 2.3 Insert the SIM card

This product support:

LTE FDD: B1/B3/B7/B8/B20/B28A;

LTE TDD: B38/B40/B41;

WCDMA: B1/B8;

GSM: B3/B8.

**Be sure the PIN code of the SIM card is disabled, and there is enough money in the SIM card.**

## 2.4 Setting map

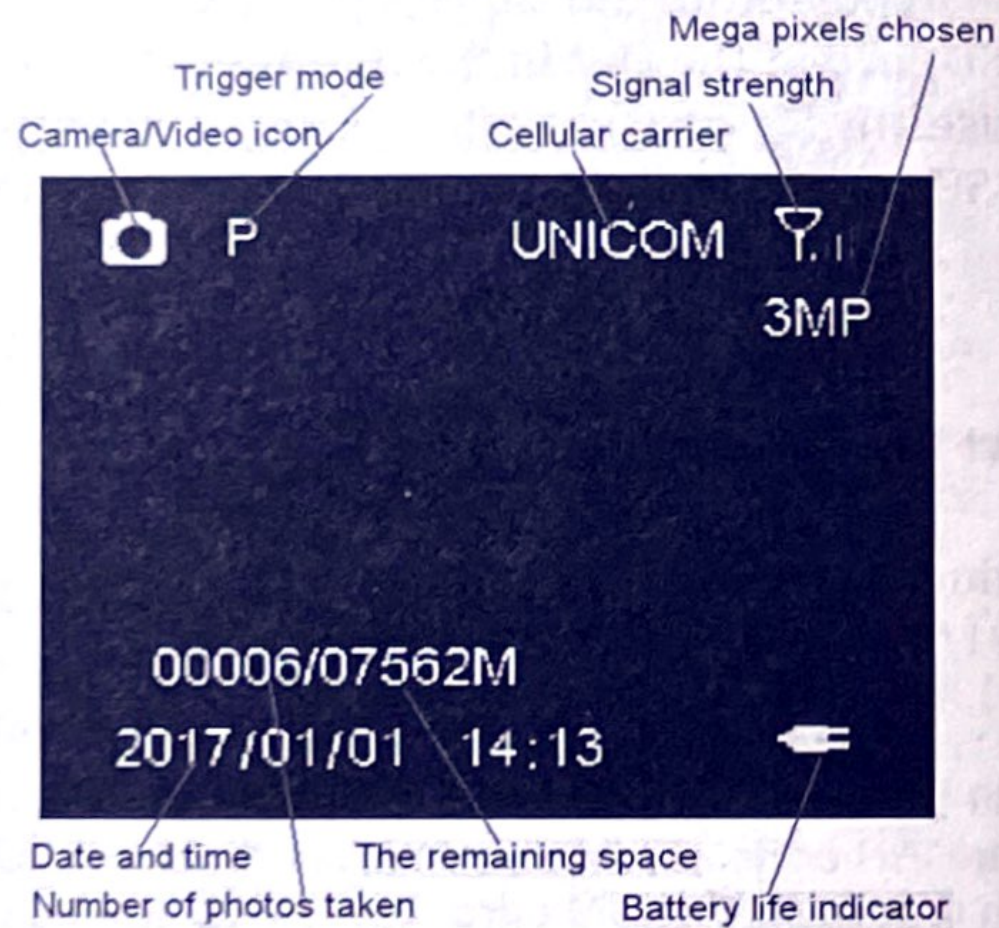


Fig2 Main Screen

## 2.6 Send a test photo

1) Switch camera to **Setup** mode, press ► button to take a picture, then press **OK** button to check this

picture;

2) Press the **MENU** button, choose **send**. You will see sending progress shows on the LCD screen.

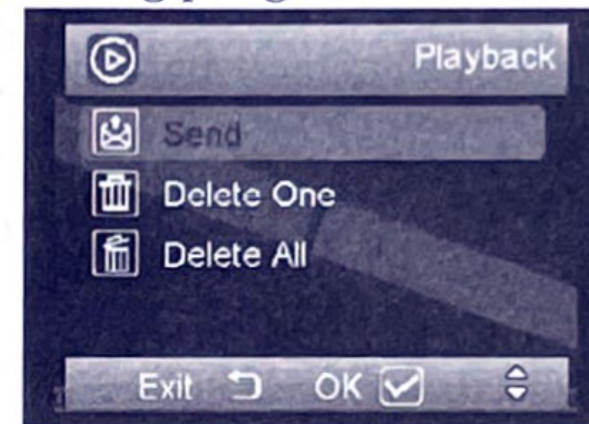


Fig 3

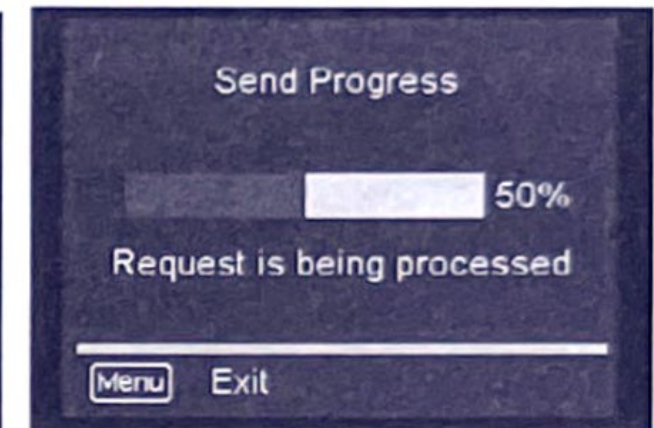


Fig 4

Once you see send successful, check your email account or phone see if you receive the correct photo.

If the sending is failure, choose **Diagnose** to generate a Log file and the FAQ will help you with your Log file.



Fig 5

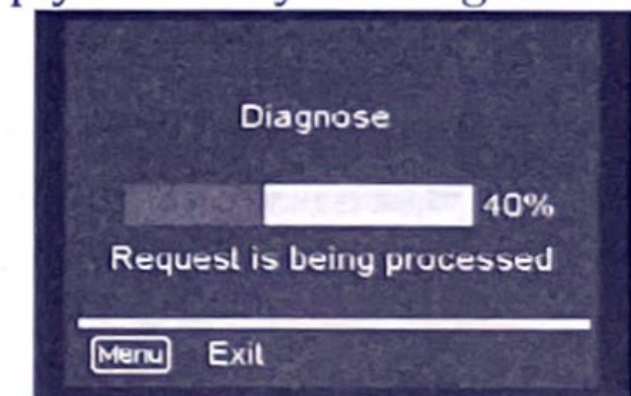


Fig 6

## 3 Customizing camera settings

### 3.1 Menu Settings

NET	
Send Mode	Instant
	Daily Report
	Instant + Daily Report
	Off
Send to	Phone/email
Edit Phone	1st/2nd/3rd/4th Number
Recipients	Four phones and four emails
SMS Switch	Off/on/Set
GPS	Off/On
Download Tool	Download tool

#### Send Mode:

**Instant:** If you want the camera to send every photo instantly, you need to choose this option. You can control the numbers of photos that are sent to your device or email every day. If you want to limit this, set the maximum number. If you want to send out every photo, regardless of the number of photos each day, set this value to 0 (zero).

**Daily Report:** This option only sends you the last photo taken each day with a report of all the other activity during the day at the preset time.

**Instant & Daily Report:** Camera will send every photo choose this option if you do not want the camera to send out the photos taken. This will make the camera perform just like a normal trail cam. (This option allow you both get instant photos and daily report.)

**Off:** choose this option if you do not want any photo be sent out.

#### Send to:

**Phone:** Choose this option if you only want the photos sent to phone numbers.

**Email:** Choose this option if you only want the photos sent to chosen e-mail addresses.

**Recipients:** you can double check the receive phone number and emails from here.

**SMS switch:** you can require photo or change settings by sending a SMS command code. Choose the **ON** option if you want to be able to control the basic functions of your camera by APP from your phone. If you do not want to have wireless control, you can leave the option at **OFF**. Also you can preset working time,

then SMS command only work during that time.

CAM		
Camera Mode	Photo	Custom Settings
	Video	Video Size: <b>WVGA/720P/1080P</b> Video Length: 5s-60s (Default: <b>10s</b> )
Custom Settings	Photo Size	3/5/ <b>8</b> /12/16/20MP
	Flash Power	Low/ <b>High</b>
	Photo Burst	1~10
		Burst Speed(Fast/Slow)
		Sending Option
Shutter Speed	<b>Normal</b> /Fast	

**Photo Burst:** It's the taken number of pictures when a triggering. If photo burst is 3, it means the camera will take 3 pictures after one triggering. You also can choose which one of the pictures will be sent via **Send Option**.

**Shutter Speed:** Normal is suitable for most application scenarios. **Fast** can be used to reduce motion blur.

PIR	
Trigger Mode	<b>PIR Trigger</b>
	Time Lapse
	Both
PIR Sensitivity	Low
	<b>Auto</b>
	High
PIR Interval	5s-60min (default: <b>30s</b> )
Time Lapse Interval	3min~24hours (default: <b>30min</b> )
Work-Time (4 groups)	Default: <b>Off</b>

**PIR Interval:** It means how often the PIR sensor can be allowed to work. This prevents the card from filling up with too many redundant images.

**Time Lapse:** When choose time lapse, camera takes photos or videos even when it is not triggered by a nearby live animal. It's useful for constant monitoring of an area.

**Work Time:** The camera can work at a preset time and preset days. In the rest of the time the camera is not work. Work hour: 00:00-00:00 means 24 hours. If the settings is cross the day, for example: Start: 20:00 Stop:



10:00 means 00:00-10:00 am and 20:00-24:00 of the chosen day.

SYS	
Set Clock	Enter to set date and time
Language	Ten languages
Password	Off/On
Rename	Off/On
Over Write	Off/On
Diagnose	~
Format SD Card	Format SD Card
Default	Restore all customer settings to default values
About	Camera Name/Software Version/UOVision

**Password:** Make sure you write down your password or save it to your mobile phone so you can access your camera if you ever forget your password.

### 3.2 Download U Set

- 1) Select the **NET** tab and navigate down to the **DOWNLOAD TOOL** and press **OK**. Shown as Figure 7 and Figure 8;
- 2) Turn the camera off.

3) Remove the SD card from your camera and insert into your personal PC card reader.

4) Locate the SD card reader in your computer.



Figure 7 Download Tool



Figure 8 Download successful

5) Unzip the file to get the **U Set** application.

### 3.3 Setup with computer

1) After double click **U Set**, you may see a warning box like below in Fig.9. Choose **YES** to continue.

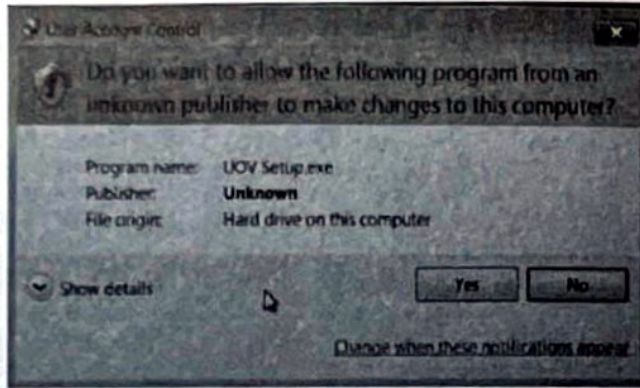


Figure 9 Warning box

2) Fill in the "E-mail" setting box shown below in Fig.10. If the default set sender email is not working in your country, please select Other in Sender email settings shown as below in Fig.11, and put your personal email account in the sender email.

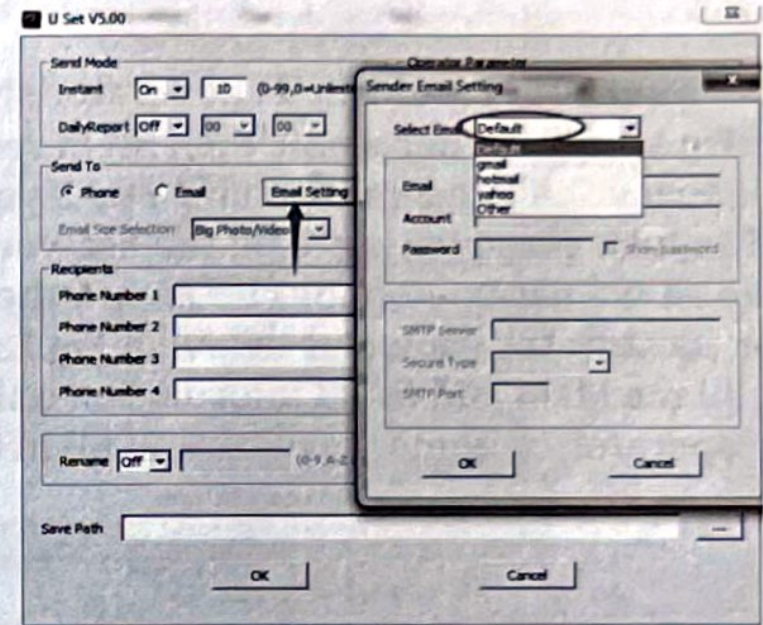


Figure 10 Function A to set up camera

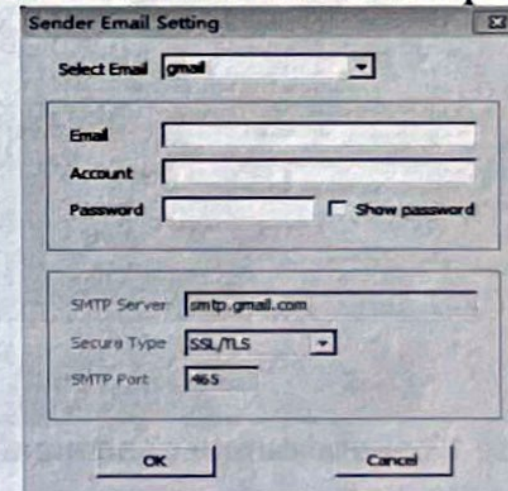


Figure 11 Customize sender email

3) Choose your country and select operator shown as below in Fig.12, set sender email, then fill in rest of the needed information like e-mail, phone etc. If your personal cellular provider is not on the list, you can customize all the parameters by choosing **Other** in **operator parameter** shown as below in Fig.13, you can look all the MMS and GPRS information online or call your operator customer service, and fill in the blanks;

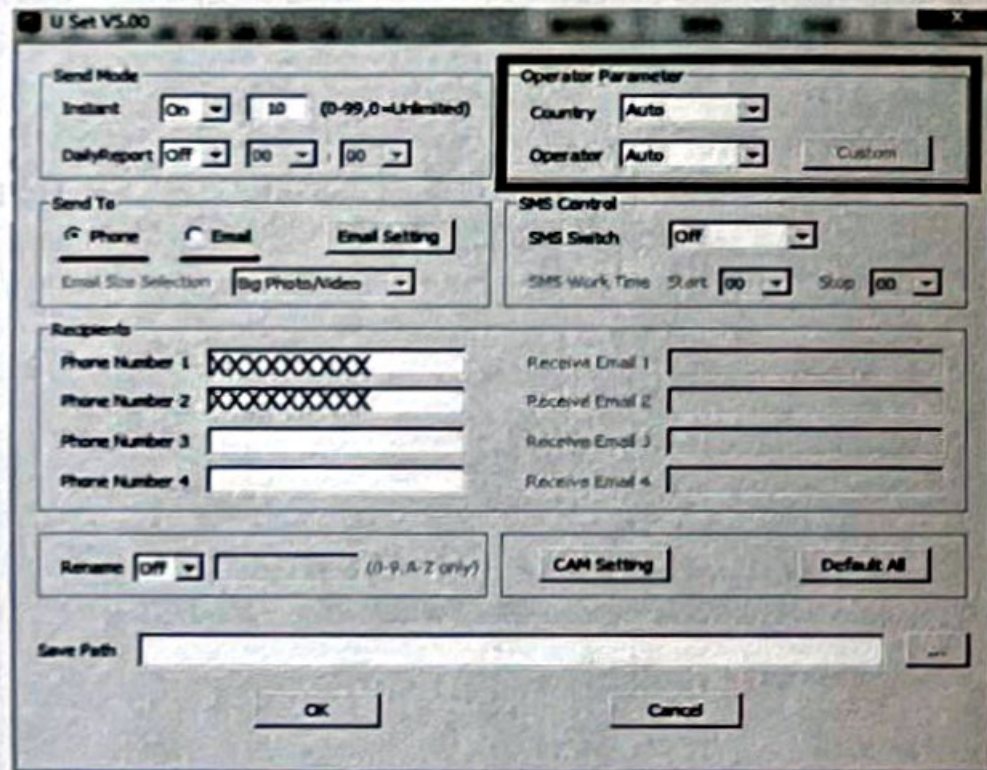


Figure 12 phone number and email address

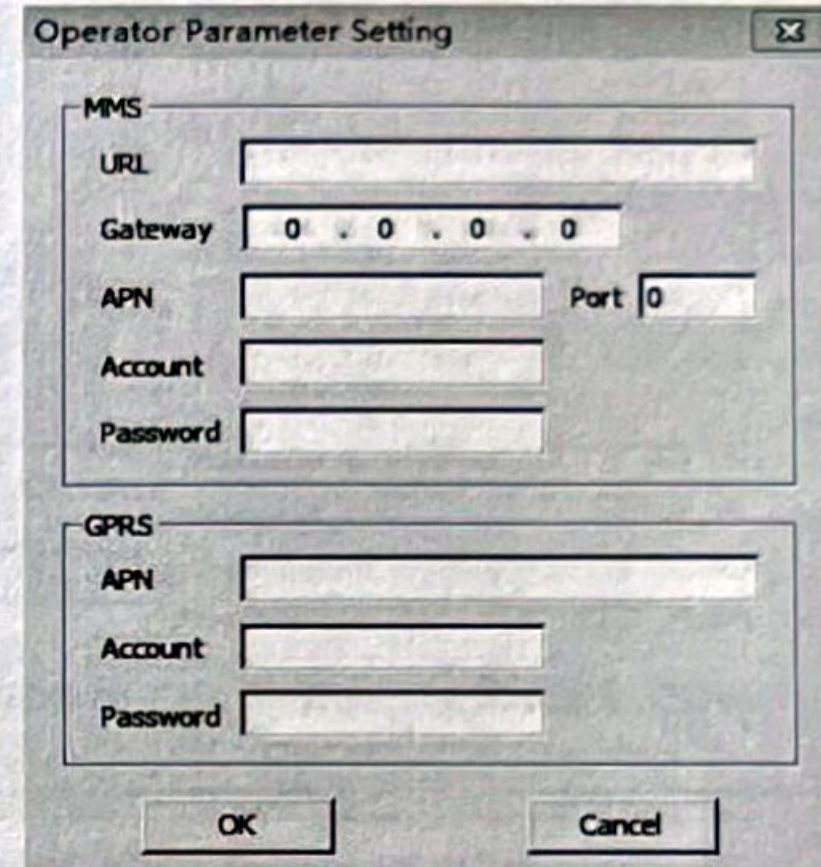


Figure 13 customize operator parameter

4) after finish customizing all the settings, make sure to save your path directly to SD card root shown below in Fig.14, then it will generate a 'profile .bin' file in SD card shown below in Fig.15.

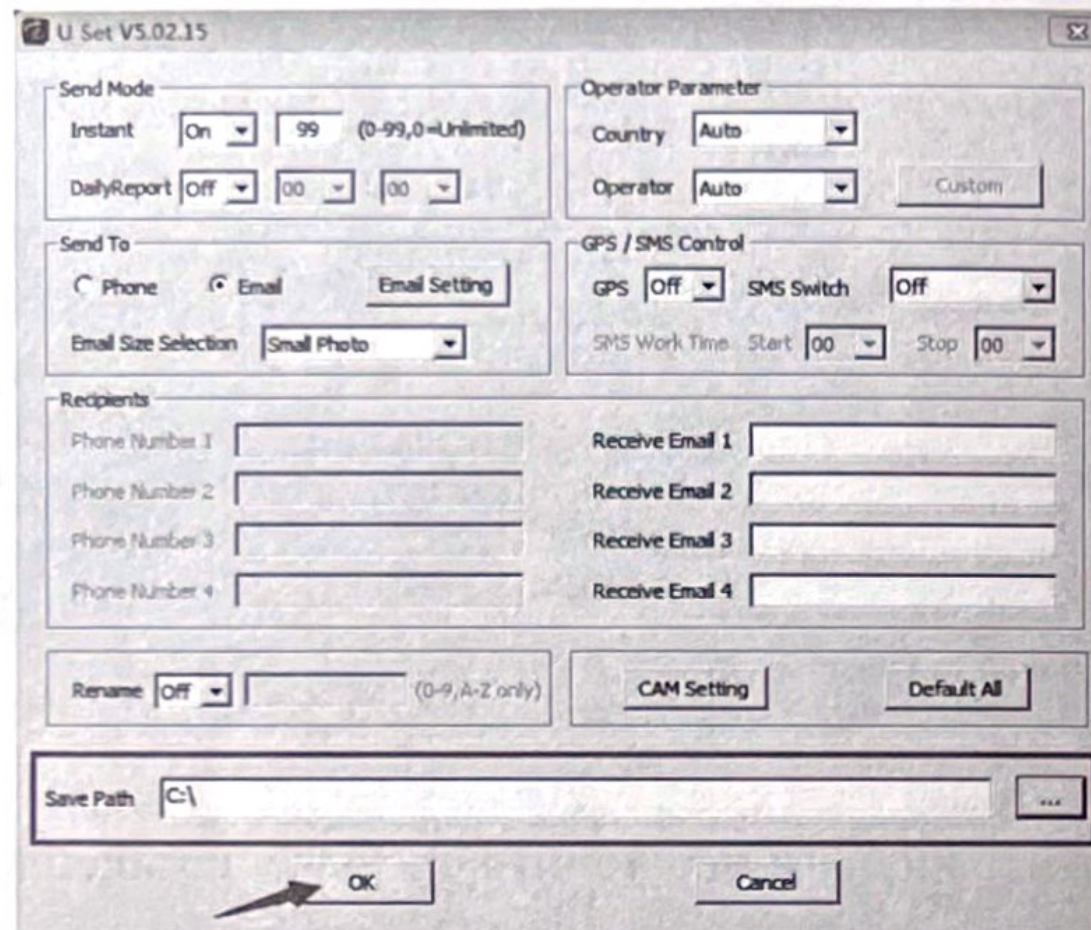


Fig 14

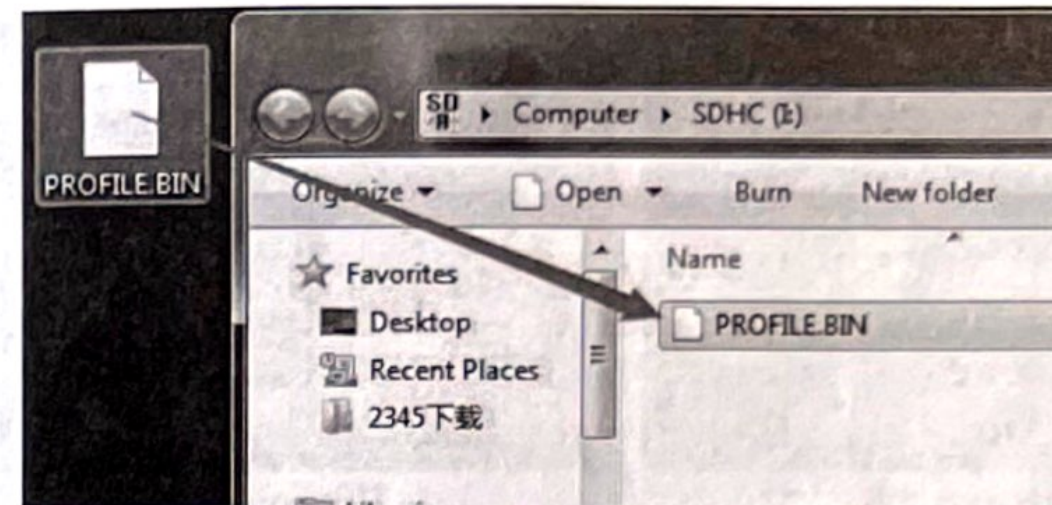


Figure 15 Save to SD card root

5) Put the SD card back to camera, switch camera to setup, then you will see 'update success' shown on the screen;

6) Switch camera to Setup mode, Press MENU after camera boot up, scroll down NET tab and press OK to enter Send to, select Phone or Email; Once you see send successful, check your email account or phone see if you receive the correct photo.



Figure 16

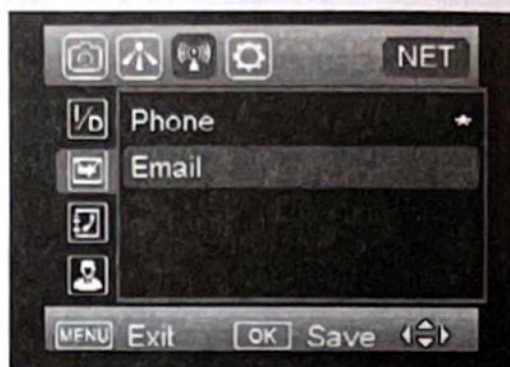


Figure 17

## 4 Auxiliary power

Your camera comes with an Auxiliary power jack. If you want to hook up an external 6V battery to power the camera, you can. The jack necessary to make the connection is a standard 4mm jack.

## 5 SMS commands

Message	Function
#110#	Take a picture / video and send
#130#0#0#	Set work time 1= Off; Set work time 2= Off; It means the

	camera will work all the time.
#211#abc@126.com#	Add an receiving E-mail address
#220#0#10#	Set send mode as Instant. The max. number of sending images per day is 10 (0 means infinite ).
#220#1#2030#	Set send mode as Daily report. The daily report time is at 20: 30
#220#2#10#2030#	Set send mode as Instant+ daily report. The max. number of sending images per day is 10. The daily report time is at 20: 30
#230#0#	Send to phone
#230#1#0#	Send to Email with big photo/video
#230#1#1#	Send to Email with smaller photo
#240#00#00#	Set SMS function as 24hours. It means the wireless module keeps waking up all day, so users can get instant response from camera all day.
#240#18#20#	Set SMS function works from 18:00 to 20:00. It means the wireless module will keep waking up from 18:00 to 20:00. So users can get instant response from camera only between

	18:00 to 20:00.
#310#0#	Set camera Mode as Photo.
#310#1#	Set camera Mode as Video.
#330#Video Size# Video Length#	Set Video Size and video length. 0=1080P, 1=720P, 2=WVGA ; Video length is from 5 to 60.
#350#0#m1#2#	PIR motion detector on, 1 min delay , High sensitivity
#360#	Location (arrive by SMS to the administrator)
#370#	Camera status (status data)

## 6 Mount tips

For best results, mount the camera approximately 1-1.5 meter off the ground and 3-15 meters. To enhance the flash, we recommend positioning the camera in an area with a backdrop to reflect the maximum amount of light.

### Note:

- a. The sun should not be shining directly on the face of the camera.

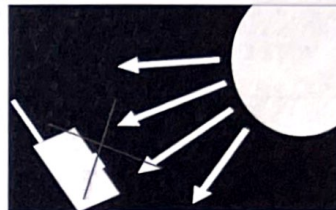


Fig 19

- b. Reflect with trees or other things to add more light to your target.

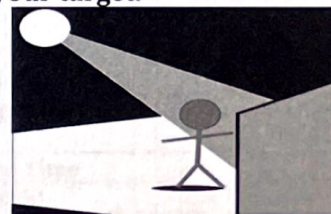


Fig 20

- c. Avoid placing the camera where the air flow is surging or too much vegetation. False triggers most occur on sunny, breezy days. When the wind moves the vegetation, the camera detects

this and cannot distinguish it from a warm-blooded animal moving through the scene.

## Appendix I : Technical Specifications

<b>Picture Resolution</b>	3/5/8/12/16/20MP
<b>Lens</b>	F/NO=2.2 FOV (Field of View) =58°
<b>Frequency Bands</b>	LTE FDD: B1/B3/B7/B8/B20/B28A; LTE TDD: B38/B40/B41; WCDMA: B1/B8; GSM: B3/B8.
<b>Flash Power</b>	Low, High
<b>Display Screen</b>	2.0" LCD
<b>Memory Card</b>	Up to 32GB
<b>Video Resolution</b>	1080P, 720P, WVGA
<b>PIR Sensor</b>	Multi Zone
<b>PIR Sensitivity</b>	Adjustable (High/Normal/Low )
<b>Trigger Time</b>	0.6s
<b>Weight</b>	474g(without batteries)
<b>Operation/Storage Tem</b>	-20 - +60°C / -30 -+70°C
<b>Trigger Interval</b>	0s - 60 min.
<b>Time lapse</b>	3min-24hours
<b>Photo Burst</b>	1-10
<b>Video Length</b>	1-60s
<b>Power Supply</b>	4AA, 8AA or 12AA

<b>Stand-by Current</b>	< 0.25 mA (<6mAh/Day)
<b>Power Consumption</b>	12AA batteries can transmit 3000+ Photos
<b>Low Battery Alert</b>	LED Indicator, Email
<b>Mounting</b>	Rope/Belt/Python lock
<b>Dimensions</b>	140mmX95mmX57mm
<b>Operation Humidity</b>	5% - 90%
<b>Security authentication</b>	CE, RoHS

## Appendix II : Parts List

<b>Part Name</b>	<b>Quantity</b>
Digital Camera	One
Antenna	One
Belt	One
User Manual	One
Quick Start	One



## Declaration of Conformity to Directive 2014/53/EU

### CE Caution:

Hereby, the manufacturer declares that this camera is in compliance with the essential requirements and other relevant provisions of Directive 2014/53/EU. Pls ask for your distributor for a copy of the Declaration of Conformity to Directive 2014/53/EU.



Customer Name:	
Contact Tel:	
Series No:	
Fault Description:	
Retailer:	

The camera manufacturer provides 12 months of warranty service for this product against manufacturing defects or malfunctions. If your camera fails to function under normal use within 1 years, the camera manufacturer will repair or replace the camera at no charge. The purchase receipt must be included from an authorized retailer to validate the warranty. Improper use of the camera resulting in damage is not covered by this warranty.

The camera manufacturer can provide repair service,

after the warranty expiration. The customer will be responsible for any charges on parts, labor and shipping costs. Please contact the manufacturer for more details.

Please contact the area dealer for more details.